

Whether your Through-Hole Technology applications require a Quick Disconnect Tab, an Insulation Displacement Connector, a Test Point Terminal, a Screw Terminal, a Receptacle, a Post, or a Multi-Layer Circuit Board Connector, we can fulfill your needs.

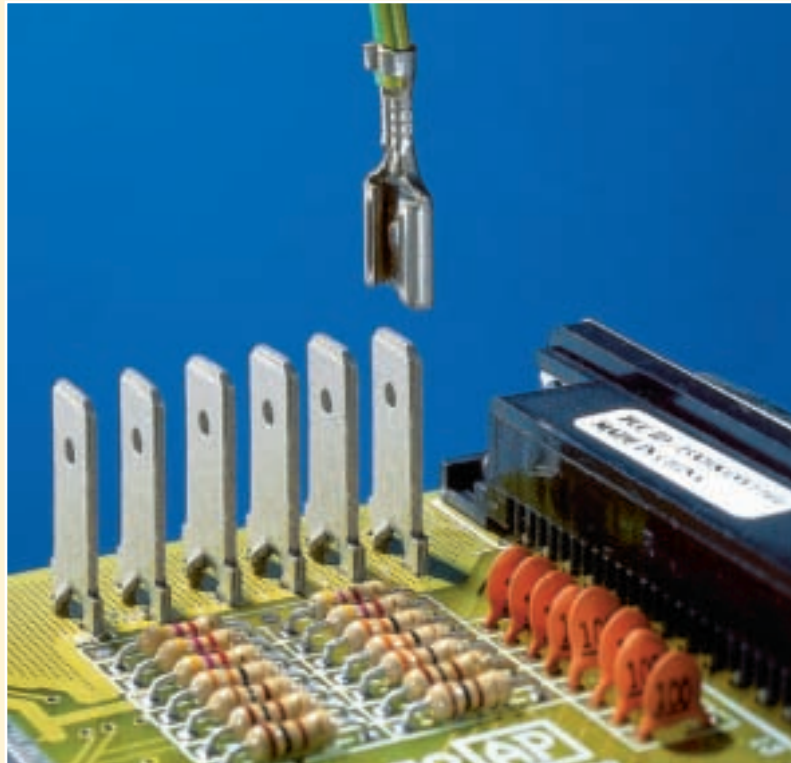
Zierick's unique features solve your most difficult interconnection problems: The **Accu-Lok™** retentive mounting feature, Zierick's **Torsion-Lok®** IDC, the **Stable-Lok®** feature which doubles terminal strength against deflection, the **Snap-In™** fuse clips' exclusive spring-load mounting technology,

and our **Accu-Pak™** receptacles are some of the reasons Zierick should be your choice for all your THT products.



Features and Benefits

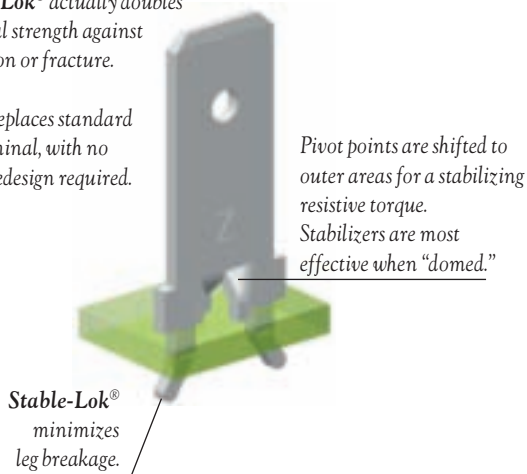
- Zierick's **Stable-Lok**[®] and **Accu-Lok**[™] mounting features improve the terminal retention of quick disconnect terminals to the PCB.
- The **Stable-Lok**[®] mounting option doubles terminal strength against fracture or mounting leg breakage.
- The **Stable-Lok**[®] concept shifts pivot points to outer mounting areas for a stabilizing resistive torque.
- Tabs/Quick Disconnects are available in vertical or horizontal configurations, in loose piece or reels.
- **Stable-Lok**[®] terminals are available in 0.187" (4.75mm), 0.205" (5.21mm), and 0.250" (6.35mm) application sizes.
- Assembly can be accomplished with Zierick hand tools or Zierick semi- and fully-automated applicators.
- **Accu-Lok**[™] mounting is designed for hole diameter tolerances as great as ±0.004" (±0.10mm) for either **Accu-Lok**[™] or splay mounting types. The terminal leg enters freely



within the hole, with controlled splitting and forming of the leg. This eliminates stress and withstands repeated mating, withdrawal, and shock.

Stable-Lok[®] actually doubles terminal strength against deflection or fracture.

Easily replaces standard tab terminal, with no board redesign required.

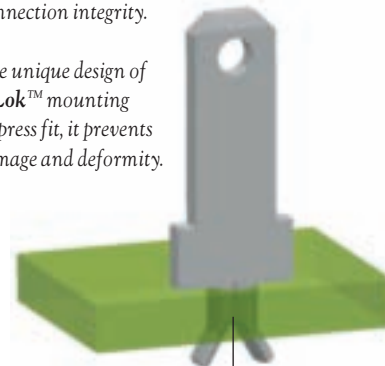


Pivot points are shifted to outer areas for a stabilizing resistive torque. Stabilizers are most effective when "domed."

Stable-Lok[®] minimizes leg breakage.

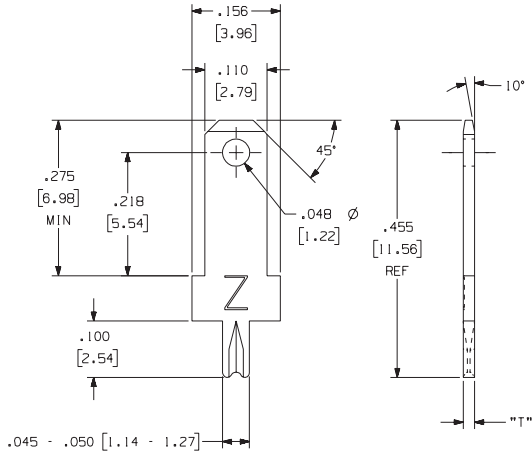
The **Accu-Lok**[™] retentive mounting feature produces exceptional PCB assembly and interconnection integrity.

Since the unique design of **Accu-Lok**[™] mounting is not a press fit, it prevents hole damage and deformity.



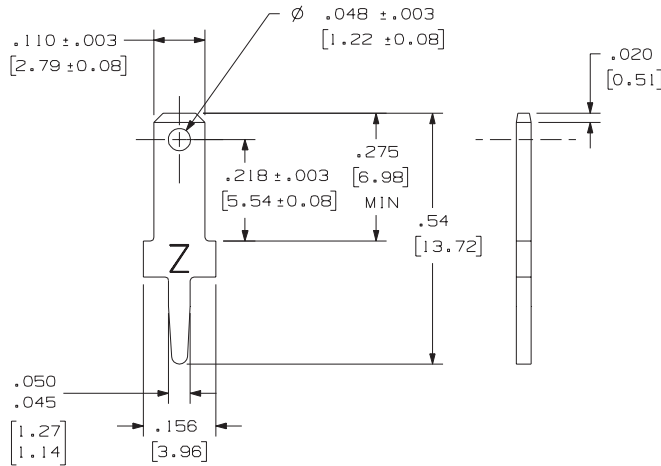
The PCB retention of **Accu-Lok**[™] mounting is accomplished by a controlled splitting and forming of the terminal leg during insertion.

Part Numbers 1063, 1064, 6063, 6064



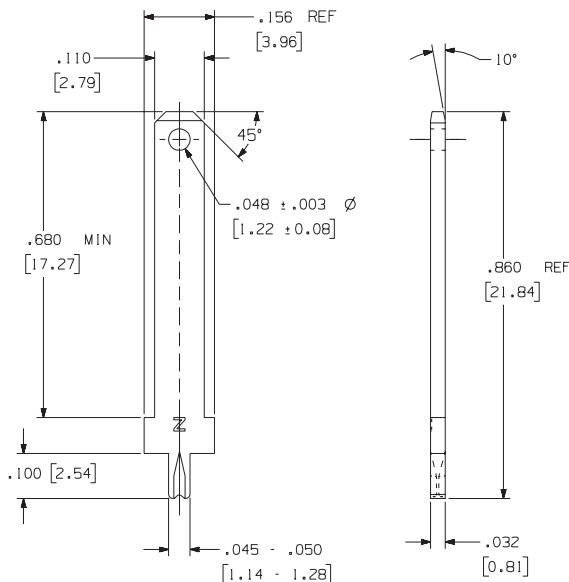
Loose Part No.	1063	1064
Reeled Part No.	6063	6064
Mounting Type	Splay	Splay
Material Thickness / Type	0.020" (0.51mm) Brass	0.032" (0.81mm) Brass
Standard Finish	Loose: 100% Tin over Copper Reeled: 100% Tin over Copper	
Mounting Hole Diameter	0.055" \pm 0.003" (1.40mm \pm 0.076mm)	0.061" \pm 0.003" (1.55mm \pm 0.076mm)
Current Rating	10 Amperes	
Applicator System	Loose: ZPT81-A Reeled: Model 9700, 9700 XY	

Part Numbers 834, 835, 6834, 6835



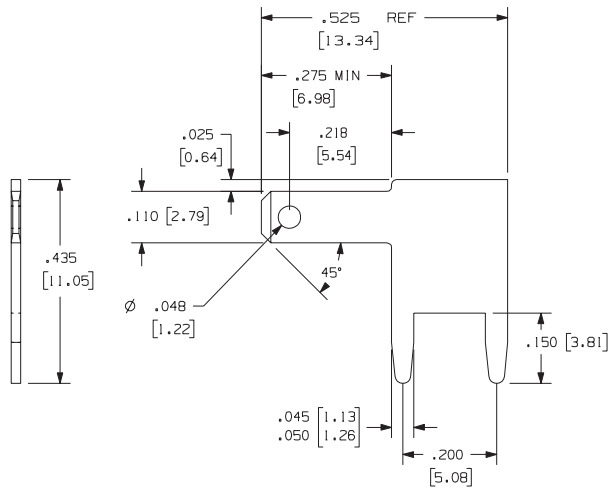
Loose Part No.	834	835
Reeled Part No.	6834	6835
Mounting Type	Press-Fit	Press-Fit
Material Thickness / Type	0.020" (0.51mm) Brass	0.032" (0.81mm) Brass
Standard Finish	Loose: 100% Tin over Copper Reeled: 100% Tin over Copper	
Mounting Hole Diameter	0.044" \pm 0.003" (1.12mm \pm 0.076mm)	0.050" \pm 0.003" (1.27mm \pm 0.076mm)
Current Rating	10 Amperes	
Applicator System	Loose: ZPT81-A Reeled: Model 9700, 9700 XY	

Part Numbers 1201, 6201



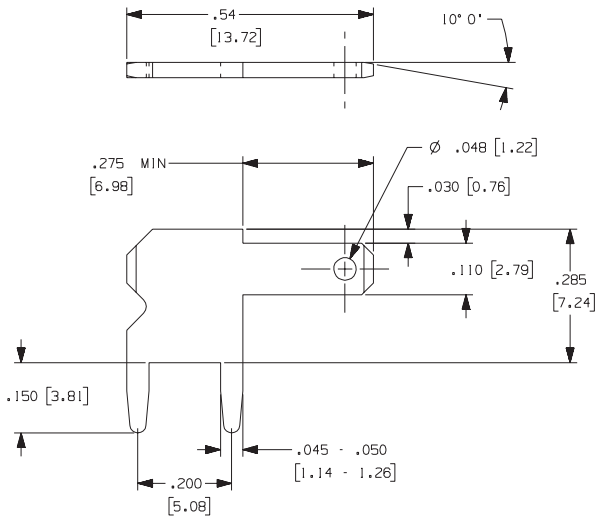
Loose Part No.	1201
Reeled Part No.	6201
Mounting Type	Splay
Material Thickness / Type	0.032" (0.81mm) Brass
Standard Finish	Loose: 100% Tin over Copper Reeled: 100% Tin over Copper
Mounting Hole Diameter	0.055" \pm 0.003" (1.40mm \pm 0.076mm)
Current Rating	10 Amperes
Applicator System	Loose: ZPT81-A Reeled: Model 9700 XY

46 0.110" (2.79mm) Tabs / Quick Disconnect Terminals



Part Numbers 948, 949

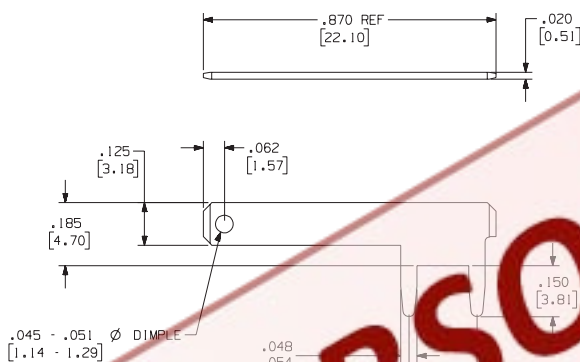
Loose Part No.	948	949
Reeled Part No.	N/A	N/A
Mounting Type	Outward or Inward Splay	
Material Thickness / Type	0.032" (0.81mm) Brass	0.020" (0.51mm) Brass
Standard Finish	100% Tin over Copper	
Mounting Hole Diameter	0.058" ±0.003" (1.47mm ±0.076mm)	0.050" ±0.003" (1.27mm ±0.076mm)
Current Rating	20 Amperes	
Applicator System	ZPT92-110	



Part Numbers 6948, 6949

Loose Part No.	N/A	N/A
Reeled Part No.	6948	6949
Mounting Type	Outward or Inward Splay	
Material Thickness / Type	0.032" (0.81mm) Brass	0.020" (0.51mm) Brass
Standard Finish	Loose: 100% Tin over Copper	
Mounting Hole Diameter	0.058" ±0.003" (1.47mm ±0.076mm)	0.050" ±0.003" (1.27mm ±0.076mm)
Current Rating	20 Amperes	
Applicator System	Model 9700, 9700 XY	

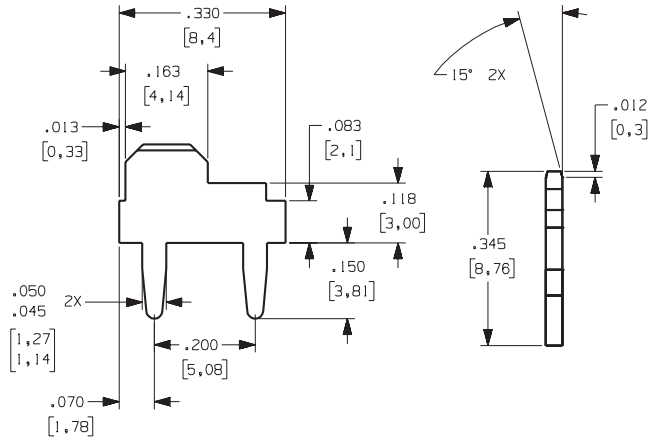
0.125" (3.18mm) Tabs / Quick Disconnect Terminals



Part Number 6186

Loose Part No.	N/A
Reeled Part No.	6186
Mounting Type	Outward or Inward Splay
Material Thickness / Type	0.020" (0.51mm) Brass
Standard Finish	Loose: 100% Tin over Copper
Mounting Hole Diameter	0.050" ±0.003" (1.27mm ±0.076mm)
Current Rating	20 Amperes
Applicator System	Model 9700, 9700 XY

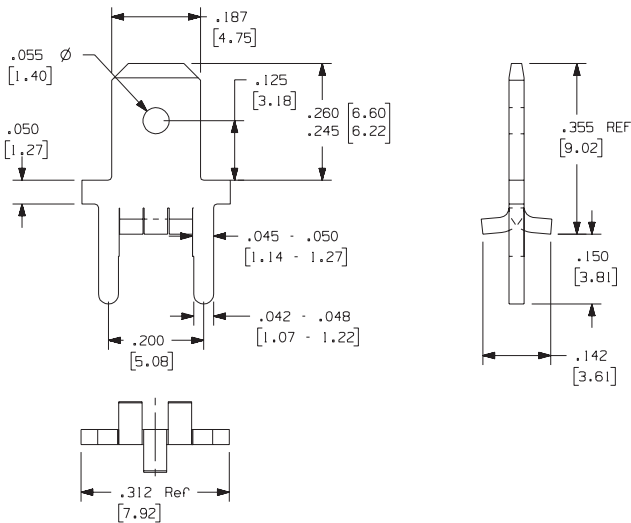
Part Number 6267



Loose Part No.	N/A
Reeled Part No.	6267
Mounting Type	Outward or Inward Splay
Material Thickness / Type	0.032" (0.81mm) Brass
Standard Finish	100% Tin over Copper
Mounting Hole Diameter	0.058" ±0.003" (1.47mm ±0.076mm)
Current Rating	15 Amperes
Applicator System	Model 9700, 9700 XY

0.187" (3.18mm) Tabs / Quick Disconnect Terminals

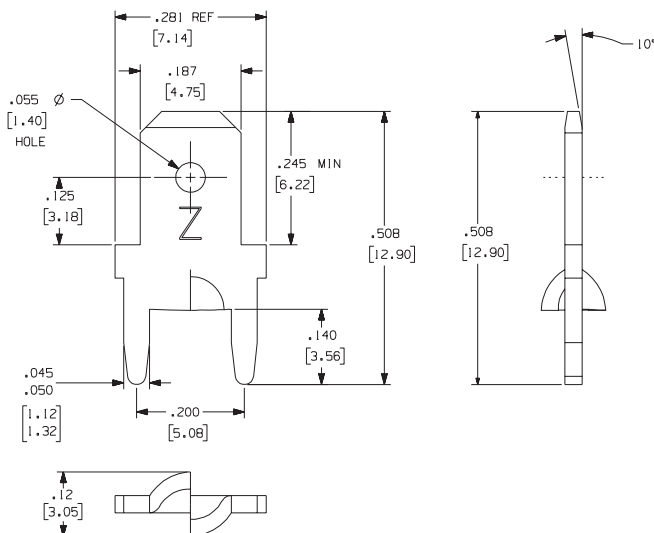
Part Number 6291



Loose Part No.	N/A
Reeled Part No.	6291
Mounting Type	Drop-In Fit
Hole Dimension	0.055" (1.408mm) hole
Material Thickness / Type	0.032" (0.81mm) Brass
Standard Finish	100% Tin over Copper
Mounting Hole Diameter	0.058" ±0.003" (1.47mm ±0.076)
Current Rating	20 AMPS
Feeder/Applicator System	For SMT Applications: Surf-Shooter SMT™ Continuous Strip Feeder For THT Applications: Model 9700 Model 9700 XY

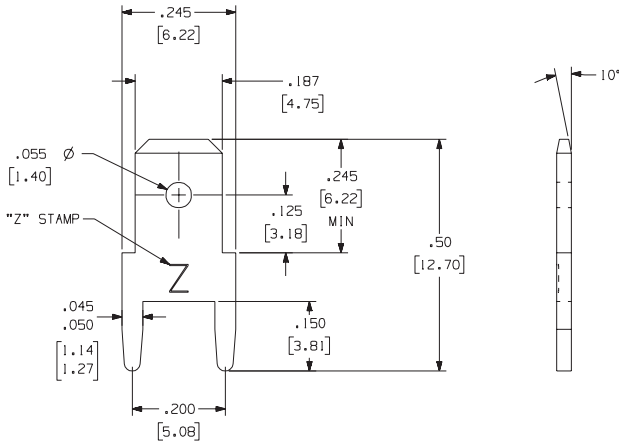
Zierick recommends .006" stencil thickness for most applications. For other stencil thicknesses, call Zierick's product development department.

Part Numbers 1027, 1024, 6027, 6024



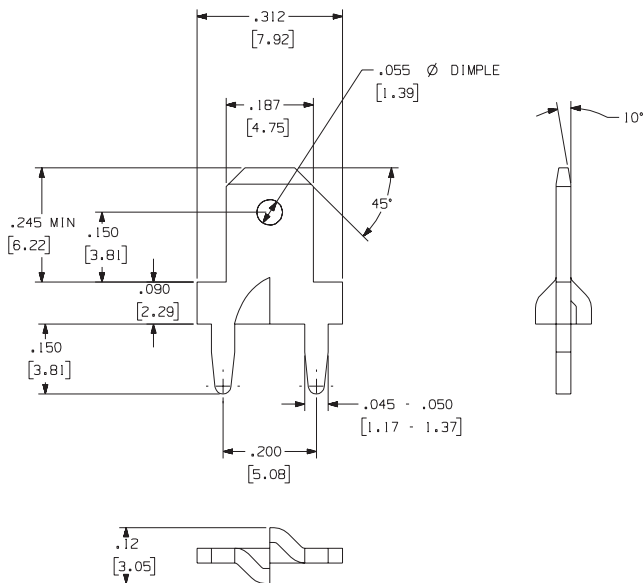
Loose Part No.	1027	1024
Reeled Part No.	6027	6024
Mounting Type	Outward or Inward Splay	
Material Thickness / Type	0.020" (0.51mm) Brass	0.032" (0.81mm) Brass
Standard Finish	Loose: 100% Tin over Copper Reeled: 100% Tin over Copper	
Mounting Hole Diameter	0.050" ±0.003" (1.27mm ±0.076mm)	0.058" ±0.003" (1.47mm ±0.076mm)
Current Rating	20 Amperes	
Applicator System	Loose: ZPT81-A Reeled: Model 9700, 9700 XY	

Part Numbers 895, 894, 6895, 6894



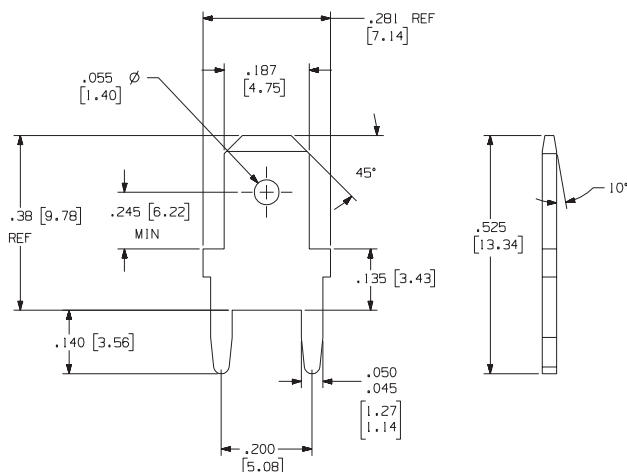
Loose Part No.	895	894
Reeled Part No.	6895	6894
Mounting Type	Outward or Inward Splay	
Material Thickness / Type	0.020" (0.51mm) Brass	0.032" (0.81mm) Brass
Standard Finish	Loose: 100% Tin over Copper Reeled: 100% Tin over Copper	
Mounting Hole Diameter	0.050" ±0.003" (1.27mm ±0.076mm)	0.058" ±0.003" (1.47mm ±0.076mm)
Current Rating	20 Amperes	
Applicator System	Loose: ZPT81-A Reeled: Model 9700, 9700 XY	

Part Numbers 1282, 6282

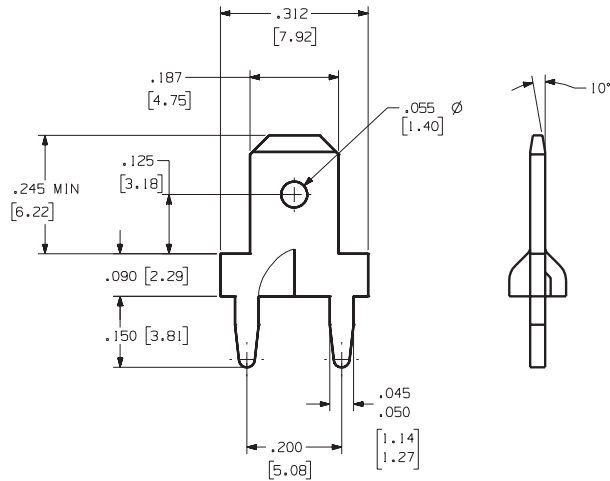


Loose Part No.	1282
Reeled Part No.	6282
Mounting Type	Outward or Inward Splay
Material Thickness / Type	0.020" (0.51mm)Brass
Standard Finish	Loose: 100% Tin over Copper
Mounting Hole Diameter	0.050" ±0.003" (1.47mm ±0.076mm)
Current Rating	10 Amperes
Applicator System	Loose: ZPT81-A Reeled: Model 9700, 9700 XY

Part Numbers 6134, 6142

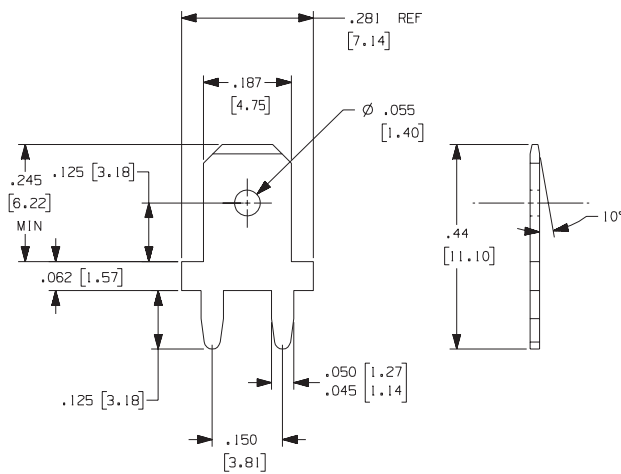


Loose Part No.	N/A	N/A
Reeled Part No.	6134	6142
Mounting Type	Outward or Inward Splay	
Material Thickness / Type	0.020" (0.51mm) Brass	0.032" (0.81mm) Brass
Standard Finish	100% Tin over Copper	
Mounting Hole Diameter	0.050" ±0.003" (1.27mm ±0.076mm)	0.058" ±0.003" (1.47mm ±0.076mm)
Current Rating	20 Amperes	
Applicator System	Reeled: Model 9700, 9700 XY	



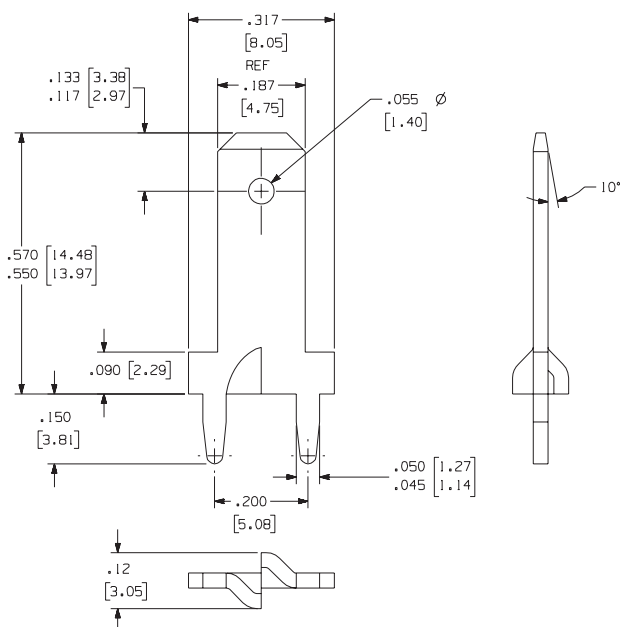
Part Numbers 1141, 6140, 6141

Loose Part No.	N/A	1141
Reeled Part No.	6140	6141
Mounting Type	Outward or Inward Splay	
Material Thickness / Type	0.020" (0.51mm) Brass	0.032" (0.81mm) Brass
Standard Finish	Loose: 100% Tin over Copper Reeled: 100% Tin over Copper	
Mounting Hole Diameter	0.050" ±0.003" (1.27mm ±0.076mm)	0.058" ±0.003" (1.47mm ±0.076mm)
Current Rating	20 Amperes	
Applicator System	Loose: ZPT81-A Reeled: Model 9700, 9700 XY	



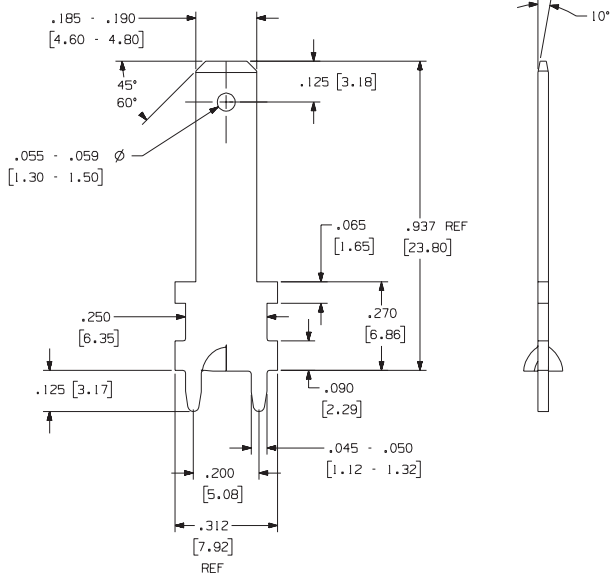
Part Numbers 1077, 6078, 6077

Loose Part No.	N/A	1077
Reeled Part No.	6078	6077
Mounting Type	Outward Splay	
Material Thickness / Type	0.020" (0.51mm) Brass	0.032" (0.81mm) Brass
Standard Finish	Loose: 100% Tin over Copper Reeled: 100% Tin over Copper	
Mounting Hole Diameter	0.050" ±0.003" (1.27mm ±0.076mm)	0.058" ±0.003" (1.47mm ±0.076mm)
Current Rating	20 Amperes	
Applicator System	Loose: ZPT81-A Reeled: Model 9700, 9700 XY	



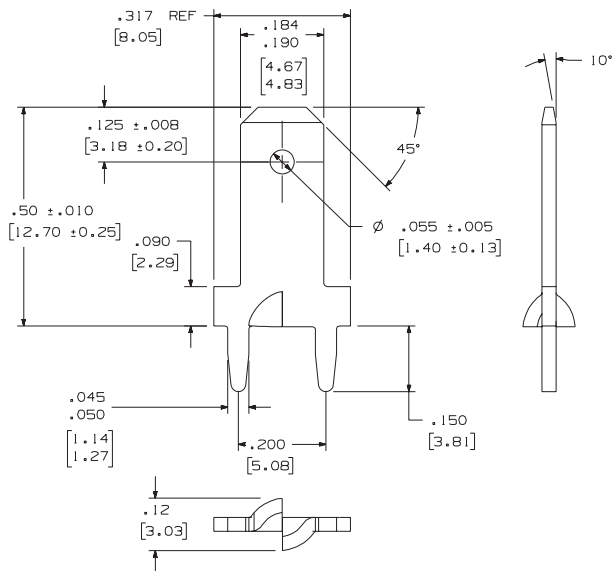
Part Numbers 1042, 6042

Loose Part No.	1042	
Reeled Part No.	6042	
Mounting Type	Outward or Inward Splay	
Material Thickness / Type	0.032" (0.81mm) Brass	
Standard Finish	Loose: 100% Tin over Copper Reeled: 100% Tin over Copper	
Mounting Hole Diameter	0.058" ±0.003" (1.47mm ±0.076mm)	
Current Rating	20 Amperes	
Applicator System	Loose: ZPT81-A Reeled: Model 9700, 9700 XY	



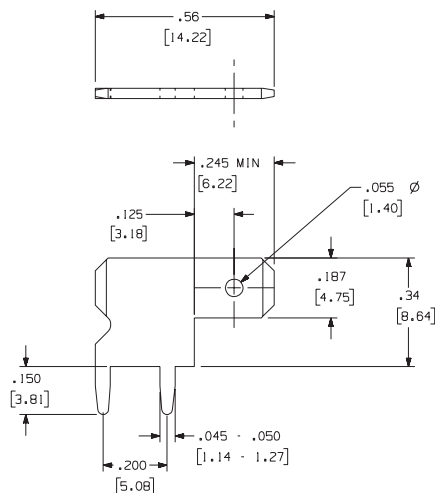
Part Numbers 1172, 6172

Loose Part No.	1172
Reeled Part No.	6172
Mounting Type	Outward or Inward Splay
Material Thickness / Type	0.032" (0.81mm) Brass
Standard Finish	Loose: 100% Tin over Copper Reeled: 100% Tin over Copper
Mounting Hole Diameter	0.058" ±0.003" (1.47mm ±0.076)
Current Rating	20 Amperes
Applicator System	Loose: ZPT81-A Reeled: Model 9700, 9700 XY



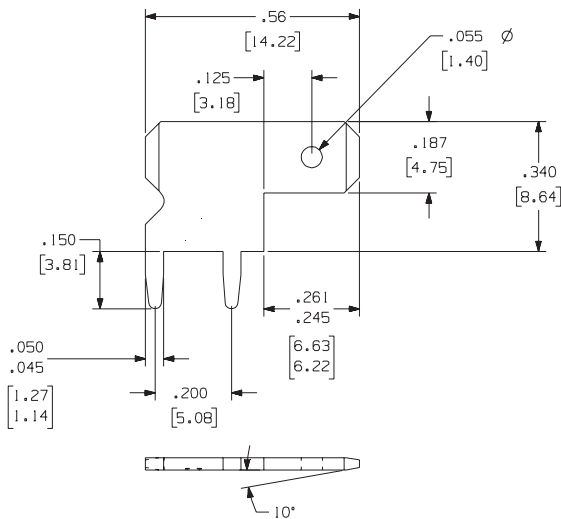
Part Number 1166

Loose Part No.	1166
Reeled Part No.	N/A
Mounting Type	Outward Splay
Material Thickness / Type	0.020" (0.51mm) Brass
Standard Finish	Loose: 100% Tin over Copper Reeled: 100% Tin over Copper
Mounting Hole Diameter	0.058" ±0.003" (1.47mm ±0.076)
Current Rating	20 Amperes
Applicator System	Loose: ZPT81-A Reeled: Model 9700, 9700 XY



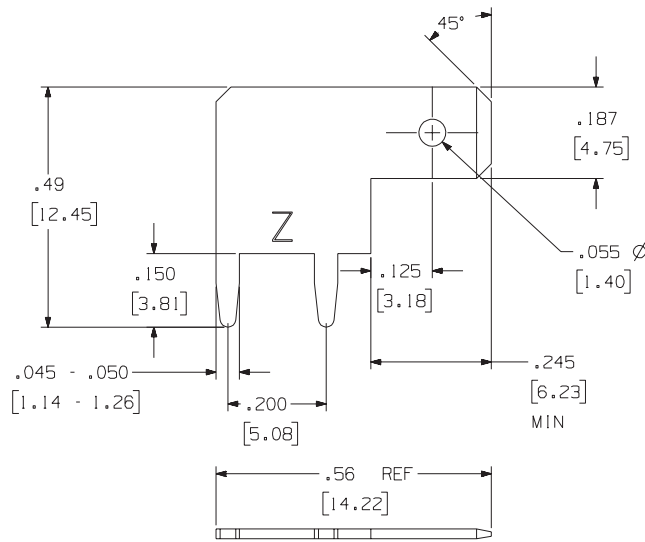
Part Numbers 6956, 6957

Loose Part No.	N/A	N/A
Reeled Part No.	6956	6957
Mounting Type	Outward or Inward Splay	
Material Thickness / Type	0.020" (0.51mm) Brass	0.032" (0.81mm) Brass
Standard Finish	100% Tin over Copper	
Mounting Hole Diameter	0.050" ±0.003" (1.27mm ±0.076mm)	0.058" ±0.003" (1.47mm ±0.076mm)
Current Rating	20 Amperes	
Applicator System	Model 9700, 9700 XY	



Part Numbers 6148, 6149

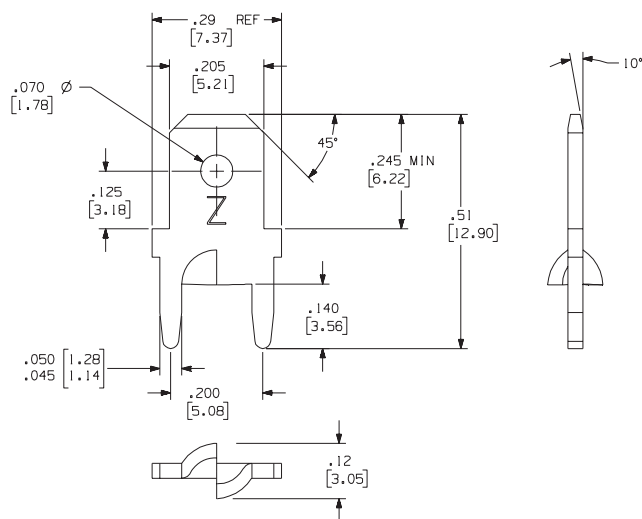
Loose Part No.	N/A	N/A
Reeled Part No.	6148	6149
Mounting Type	Outward or Inward Splay	
Material Thickness / Type	0.032" (0.81mm) Brass	0.020" (0.51mm) Brass
Standard Finish	100% Tin over Copper	
Mounting Hole Diameter	0.058" ±0.003" (1.47mm ±0.076)	0.050" ±0.003" (1.27mm ±0.076)
Current Rating	20 Amperes	
Applicator System	Model 9700, 9700 XY	



Part Numbers 956, 957

Loose Part No.	956	957
Mounting Type	Outward or Inward Splay	
Material Thickness / Type	0.020" (0.51mm) Brass	0.032" (0.81mm) Brass
Standard Finish	100% Tin over Copper	
Mounting Hole Diameter	0.050" ±0.003" (1.27mm ±0.076)	0.058" ±0.003" (1.47mm ±0.076)
Current Rating	20 Amperes	
Applicator System	ZPT92-187	

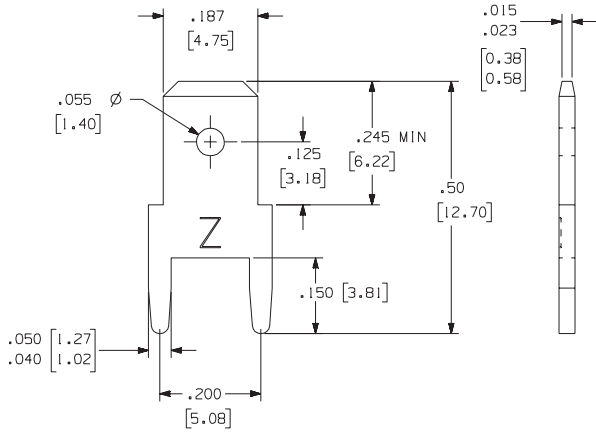
0.205" (5021mm) Tabs / Quick Disconnect Terminals



Part Numbers 1066, 1065, 6065

Loose Part No.	1066	1065
Reeled Part No.		6065
Mounting Type	Outward or Inward Splay	
Material Thickness / Type	0.020" (0.51mm) Brass	0.032" (0.81mm) Brass
Standard Finish	Loose: 100% Tin over Copper Reeled: 100% Tin over Copper	
Mounting Hole Diameter	0.050" ±0.003" (1.27mm ±0.076)	0.058" ±0.003" (1.47mm ±0.076)
Current Rating	20 Amperes	
Applicator System	Loose: ZPT81-A Reeled: Model 9700, 9700 XY	

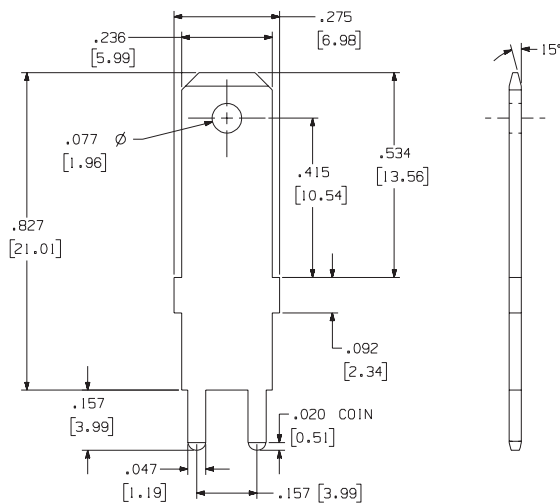
52 0.205" (5.21mm) Tabs / Quick Disconnect Terminals



Part Numbers 893, 892

Loose Part No.	893	892
Reeled Part No.	N/A	N/A
Mounting Type	Outward or Inward Splay	
Material Thickness / Type	0.020" (0.51mm) Brass	0.032" (0.81mm) Brass
Standard Finish	100% Tin over Copper	
Mounting Hole Diameter	0.050" ±0.003" (1.27mm ±0.076)	0.058" ±0.003" (1.47mm ±0.076)
Current Rating	20 Amperes	
Applicator System	ZPT81-A	

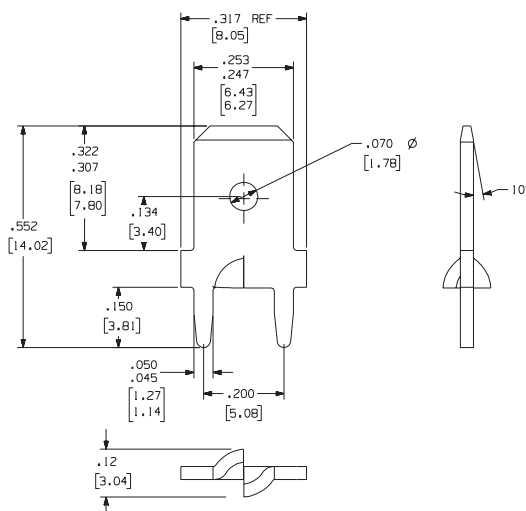
0.236" (5.99mm) Tabs / Quick Disconnect Terminals



Part Numbers 1115, 6115

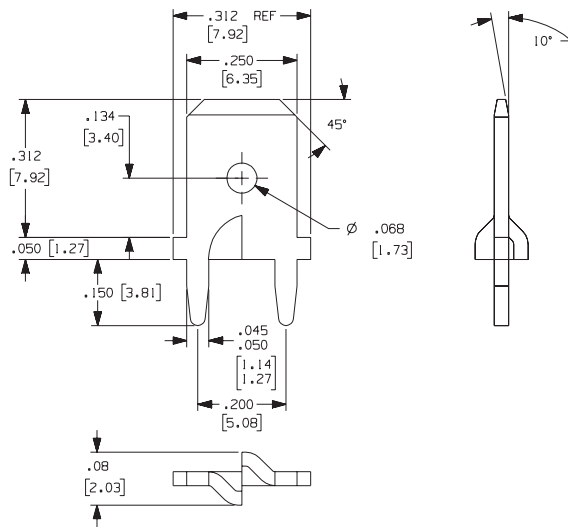
Loose Part No.	1115
Reeled Part No.	6115
Mounting Type	Outward Splay
Material Thickness / Type	0.032" (0.81mm) Brass
Standard Finish	Loose: 100% Tin over Copper Reeled: 100% Tin over Copper
Mounting Hole Diameter	0.058" ±0.003" (1.47mm ±0.076)
Current Rating	20 Amperes
Applicator System	Loose: ZPT81-A Reeled: Model 9700, 9700 XY

0.250" (6.35mm) Tabs / Quick Disconnect Terminals



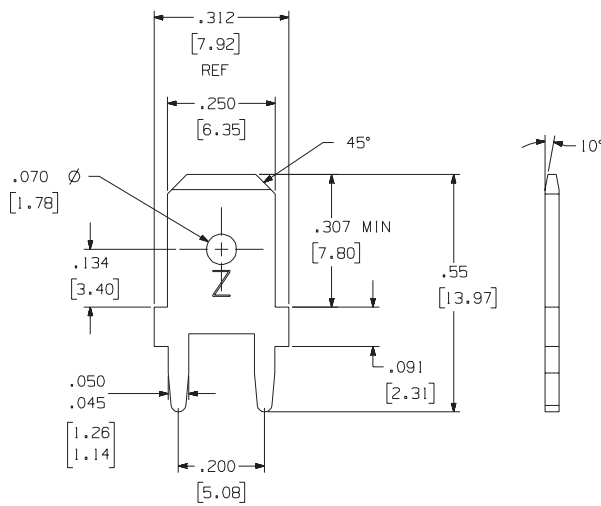
Part Numbers 1021, 6021, 1198, 6198

Loose Part No.	1021	1198
Reeled Part No.	6021	6198
Dim 'A'	0.134" (3.40mm)	0.160" (4.06mm)
Feature 'B'	0.070" (1.78mm) HOLE	0.070" (1.78mm) DIMPLE
Mounting Type	Outward or Inward Splay	
Material Thickness / Type	0.032" (0.81mm) Brass	
Standard Finish	Loose: 100% Tin over Copper Reeled: 100% Tin over Copper	
Mounting Hole Diameter	0.058" ±0.003" (1.47mm ±0.076)	
Current Rating	20 Amperes	
Applicator System	Loose: ZPT81-A Reeled: Model 9700, 9700 XY	



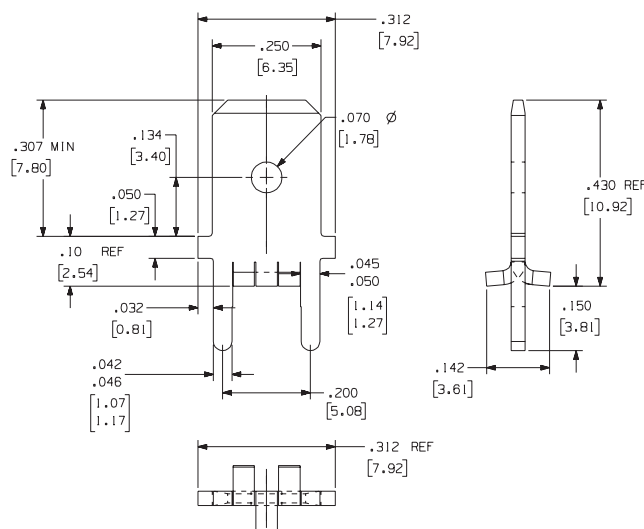
Part Numbers 1061, 6061

Loose Part No.	1061
Reeled Part No.	6061
Mounting Type	Outward or Inward Splay
Material Thickness / Type	0.032" (0.81mm) Brass
Standard Finish	Loose: 100% Tin over Copper Reeled: 100% Tin over Copper
Mounting Hole Diameter	0.058" ±0.003" (1.47mm ±0.076)
Current Rating	20 Amperes
Applicator System	Loose: ZPT81-A Reeled: Model 9700, 9700 XY



Part Numbers 836, 6836

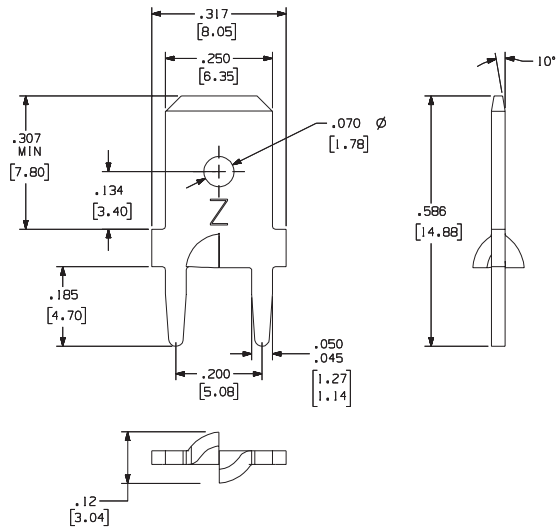
Loose Part No.	836
Reeled Part No.	6836
Mounting Type	Outward or Inward Splay
Material Thickness / Type	0.032" (0.81mm) Brass
Standard Finish	Loose: 100% Tin over Copper Reeled: 100% Tin over Copper
Mounting Hole Diameter	0.058" ±0.003" (1.47mm ±0.076)
Current Rating	20 Amperes
Applicator System	Loose: ZPT81-A Reeled: Model 9700, 9700 XY



Part Number 6284

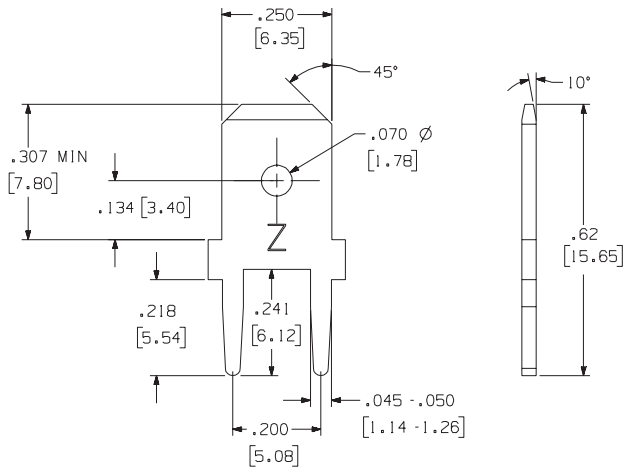
Loose Part No.	N/A
Reeled Part No.	6284
Mounting Type	Drop-In Fit
Hole Dimension	0.070" (1.78mm) hole
Material Thickness / Type	0.032" (0.81mm) Brass
Standard Finish	100% Tin over Copper
Mounting Hole Diameter	0.058" ±0.003" (1.47mm ±0.076)
Current Rating	20 AMPS
Feeder/Applicator System	For SMT Applications: Surf-Shooter SMT Continuous Strip Feeder For THT Applications: Model 9700 Model 9700 XY

Zierick recommends .006" stencil thickness for most applications. For other stencil thicknesses, call Zierick's product development department.



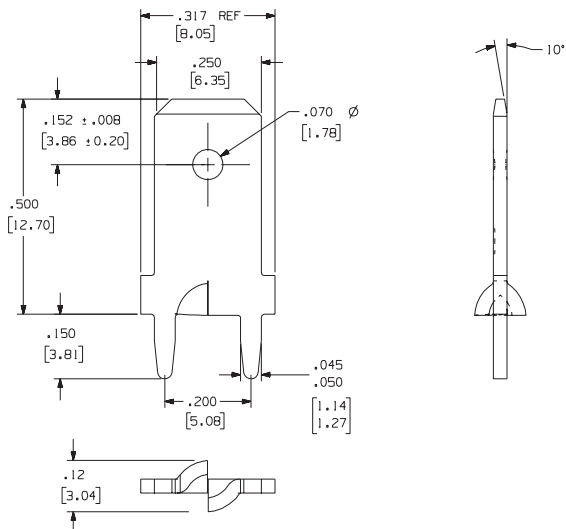
Part Numbers 1060, 6060

Loose Part No.	1060
Reeled Part No.	6060
Mounting Type	Outward or Inward Splay
Material Thickness / Type	0.032" (0.81mm) Brass
Standard Finish	Loose: 100% Tin over Copper Reeled: 100% Tin over Copper
Mounting Hole Diameter	0.058" ±0.003" (1.47mm ±0.076)
Current Rating	20 Amperes
Applicator System	Loose: ZPT81-A Reeled: Model 9700, 9700 XY



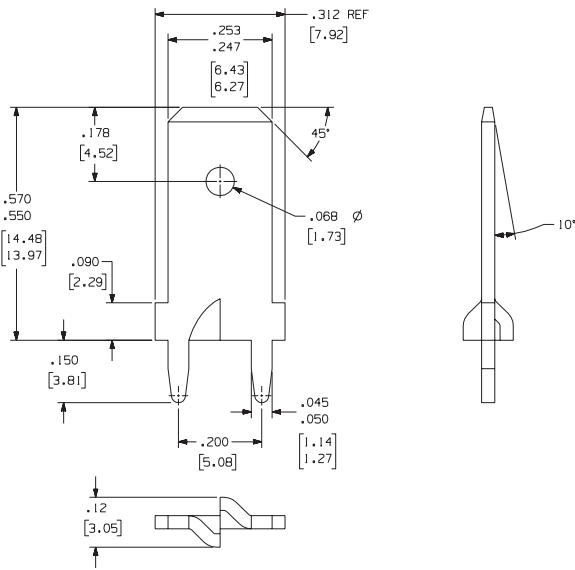
Part Number 906

Loose Part No.	906
Reeled Part No.	N/A
Mounting Type	Outward or Inward Splay
Material Thickness / Type	0.032" (0.81mm) Brass
Standard Finish	100% Tin over Copper
Mounting Hole Diameter	0.058" ±0.003" (1.47mm ±0.076)
Current Rating	20 Amperes
Applicator System	ZPT81-A



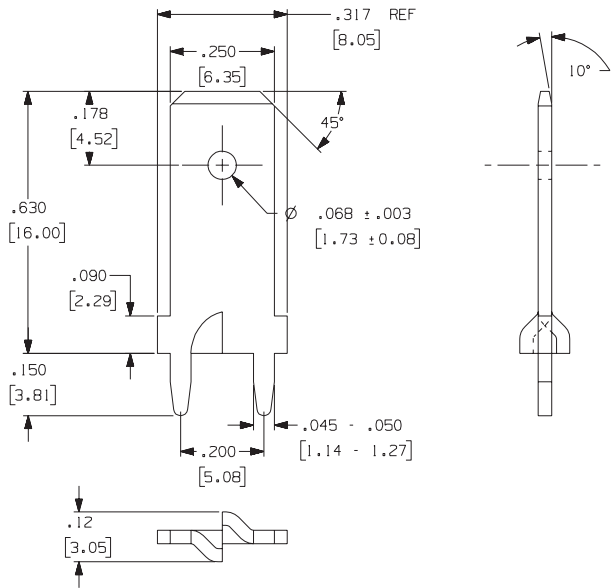
Part Numbers 1045, 6045

Loose Part No.	1045
Reeled Part No.	6045
Mounting Type	Outward or Inward Splay
Material Thickness / Type	0.032" (0.81mm) Brass
Standard Finish	Loose: 100% Tin over Copper Reeled: 100% Tin over Copper
Mounting Hole Diameter	0.058" ±0.003" (1.47mm ±0.076)
Current Rating	20 Amperes
Applicator System	Loose: ZPT81-A Reeled: Model 9700, 9700 XY



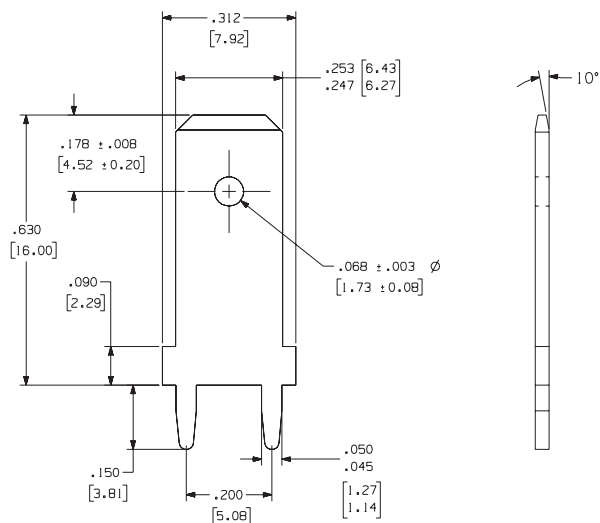
Part Numbers 1041, 6041

Loose Part No.	1041
Reeled Part No.	6041
Mounting Type	Outward or Inward Splay
Material Thickness / Type	0.032" (0.81mm) Brass
Standard Finish	Loose: 100% Tin over Copper Reeled: 100% Tin over Copper
Mounting Hole Diameter	0.058" ±0.003" (1.47mm ±0.076)
Current Rating	20 Amperes
Applicator System	Loose: ZPT81-A Reeled: Model 9700, 9700 XY



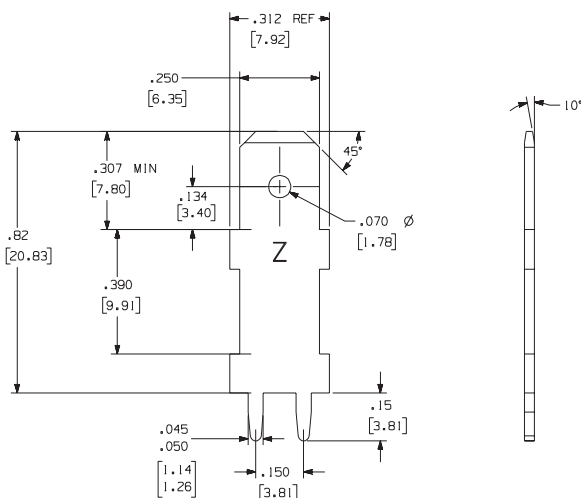
Part Numbers 1057, 6057

Loose Part No.	1057
Reeled Part No.	6057
Mounting Type	Outward or Inward Splay
Material Thickness / Type	0.032" (0.81mm) Brass
Standard Finish	Loose: 100% Tin over Copper Reeled: 100% Tin over Copper
Mounting Hole Diameter	0.058" ±0.003" (1.47mm ±0.076)
Current Rating	20 Amperes
Applicator System	Loose: ZPT81-A Reeled: Model 9700, 9700 XY



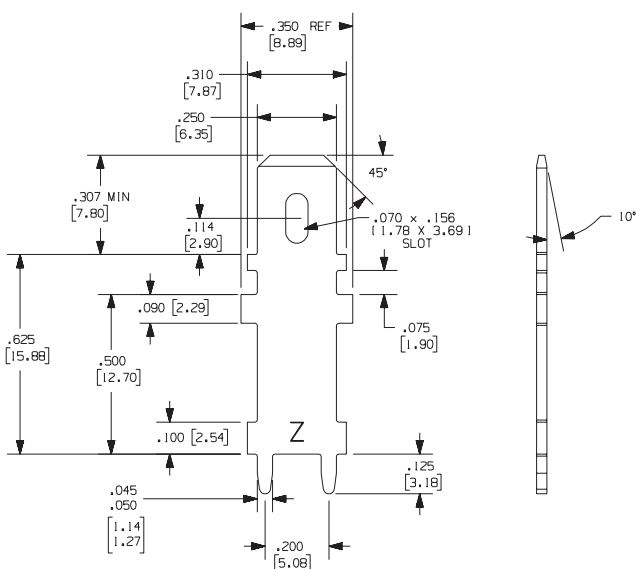
Part Numbers 972, 6224

Loose Part No.	972
Reeled Part No.	6224
Mounting Type	Outward or Inward Splay
Material Thickness / Type	0.032" (0.81mm) Brass
Standard Finish	Loose: 100% Tin over Copper Reeled: 100% Tin over Copper
Mounting Hole Diameter	0.058" ±0.003" (1.47mm ±0.076)
Current Rating	20 Amperes
Applicator System	Loose: ZPT81-A Reeled: Model 9700, 9700 XY



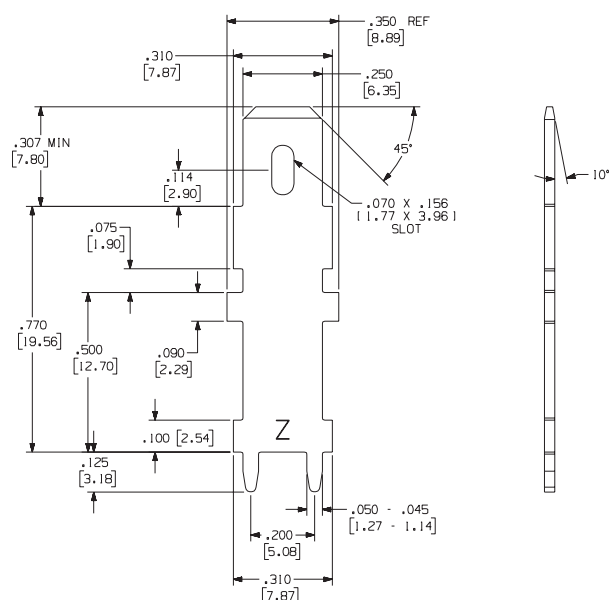
Part Number 953-MOD

Loose Part No.	953-MOD
Reeled Part No.	N/A
Mounting Type	Outward Splay
Material Thickness / Type	0.032" (0.81mm) Brass
Standard Finish	100% Tin over Copper
Mounting Hole Diameter	0.058" ±0.003" (1.47mm ±0.076)
Current Rating	20 Amperes
Applicator System	ZPT81-A



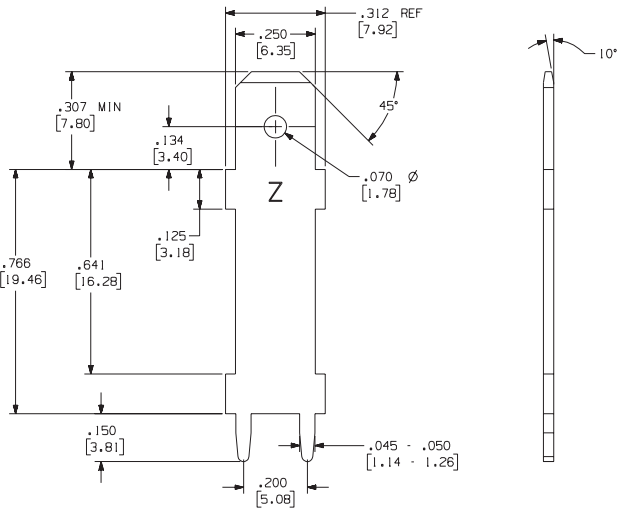
Part Numbers 1113, 6113

Loose Part No.	1113
Reeled Part No.	6113
Mounting Type	Outward or Inward Splay
Material Thickness / Type	0.032" (0.81mm) Brass
Standard Finish	Loose: 100% Tin over Copper Reeled: 100% Tin over Copper
Mounting Hole Diameter	0.058" ±0.003" (1.47mm ±0.076)
Current Rating	20 Amperes
Applicator System	Loose: ZPT81-A Reeled: Model 9700, 9700 XY



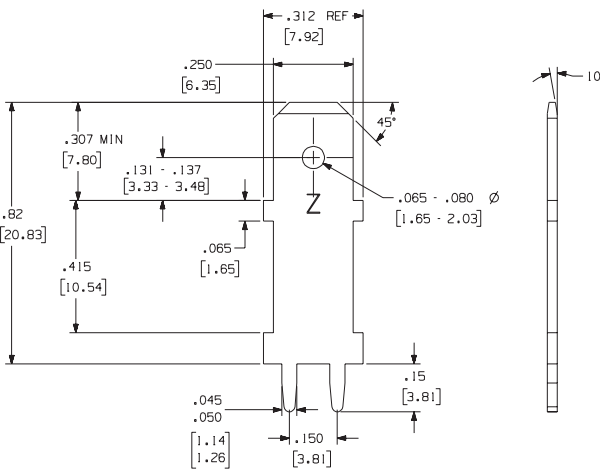
Part Numbers 1112, 6112

Loose Part No.	1112
Reeled Part No.	6112
Mounting Type	Outward or Inward Splay
Material Thickness / Type	0.032" (0.81mm) Brass
Standard Finish	Loose: 100% Tin over Copper Reeled: 100% Tin over Copper
Mounting Hole Diameter	0.058" ±0.003" (1.47mm ±0.076)
Current Rating	20 Amperes
Applicator System	Loose: ZPT81-A Reeled: Model 9700, 9700 XY



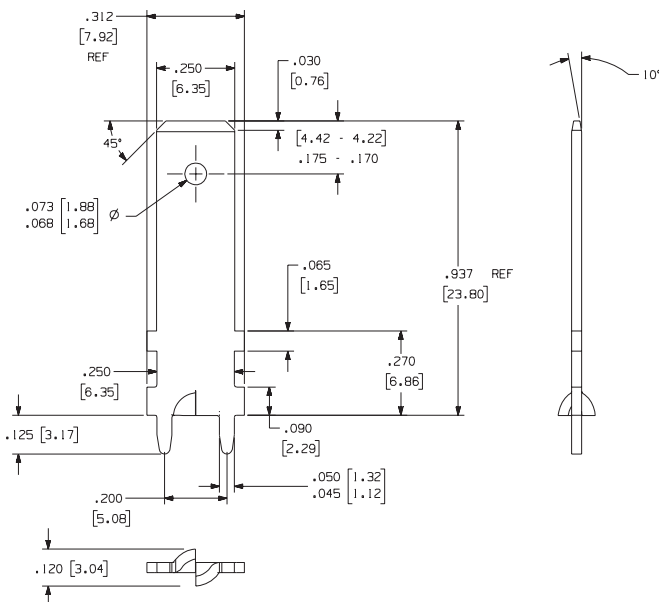
Part Number 953

Loose Part No.	953
Reeled Part No.	N/A
Mounting Type	Outward Splay
Material Thickness / Type	0.032" (0.81mm) Brass
Standard Finish	100% Tin over Copper
Mounting Hole Diameter	0.058" ±0.003" (1.47mm ±0.076)
Current Rating	20 Amperes
Applicator System	ZPT81-A



Part Number 6110

Loose Part No.	N/A
Reeled Part No.	6110
Mounting Type	Outward Splay
Material Thickness / Type	0.032" (0.81mm) Brass
Standard Finish	100% Tin over Copper
Mounting Hole Diameter	0.058" ±0.003" (1.47mm ±0.076)
Current Rating	20 Amperes
Applicator System	Model 9700, 9700 XY



Part Numbers 1173, 6173

Loose Part No.	1173
Reeled Part No.	6173
Mounting Type	Outward or Inward Splay
Material Thickness / Type	0.032" (0.81mm) Brass
Standard Finish	Loose: 100% Tin over Copper Reeled: 100% Tin over Copper
Mounting Hole Diameter	0.058" ±0.003" (1.47mm ±0.076)
Current Rating	20 Amperes
Applicator System	Loose: ZPT81-A Reeled: Model 9700, 9700 XY

Part Number 1131

Loose Part No.	1131
Reeled Part No.	N/A
Mounting Type	Outward or Inward Splay
Material Thickness / Type	0.032" (0.81mm) Brass
Standard Finish	100% Tin over Copper
Mounting Hole Diameter	0.058" ±0.003" (1.47mm ±0.076)
Current Rating	30 Amperes
Applicator System	ZPT81-1131

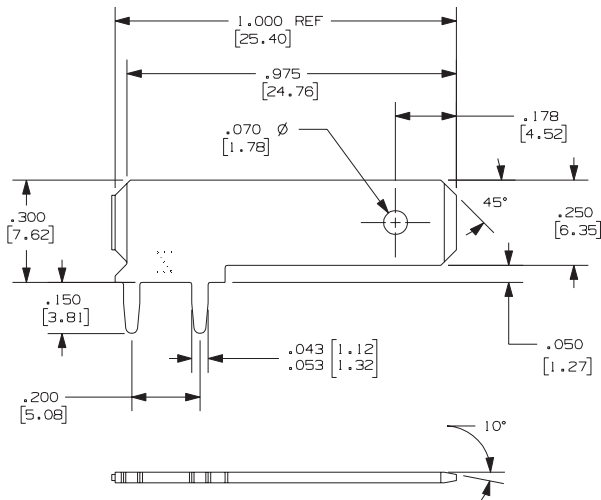
0.250" (6.35mm) Right Angle Tabs / Quick Disconnect Terminals

Part Number 901

Loose Part No.	901
Reeled Part No.	N/A (see PN 6901)
Mounting Type	Outward or Inward Splay
Material Thickness / Type	0.032" (0.81mm) Brass
Standard Finish	100% Tin over Copper
Mounting Hole Diameter	0.058" ±0.003" (1.47mm ±0.076)
Current Rating	20 Amperes
Applicator System	ZPT92-250

Part Number 6901

Loose Part No.	N/A (see PN 901)
Reeled Part No.	6901
Mounting Type	Outward or Inward Splay
Material Thickness / Type	0.032" (0.81mm) Brass
Standard Finish	100% Tin over Copper
Mounting Hole Diameter	0.058" ±0.003" (1.47mm ±0.076)
Current Rating	20 Amperes
Applicator System	Model 9700, 9700 XY



Part Numbers 6080, 6152

Reeled Part No.	6080	6152
Feature 'A'	0.070" (1.78mm) HOLE	No Hole
Mounting Type	Outward or Inward Splay	
Material Thickness / Type	0.032" (0.81mm) Brass	
Standard Finish	100% Tin over Copper	
Mounting Hole Diameter	0.058" ±0.003" (1.47mm ±0.076)	
Current Rating	20 Amperes	
Applicator System	Model 9700, 9700 XY	

Underwriters Lab

Zierick Manufacturing Corporation is pleased to advise that the majority of our quick disconnect tabs are recognized to U.S. and Canadian requirements under the Component Recognition Program of Underwriters Laboratories, Inc. The Component Program of Underwriters Laboratories, Inc. assures that quick disconnect terminals meet the requirements of the Underwriters Laboratories, Inc. specification number ANSI UL 310.

For a complete listing of Zierick's UL recommended Quick Disconnect terminals, visit the Zierick website, www.zierick.com and search for UL. There you will see direct links to the UL listings for the United States and for Canada.

Or you can visit the UL website, www.ul.com, and scroll to the bottom of the page. Under "Tools", select "Online Certifications Directory". In the box next to "Company Name" type "Zierick" and scroll down to press the "Search" button. A page will open which shows our Quick-Connects certified for the US and for Canada. Under "Link to File" select the country of choice and you will find the Zierick part numbers that are recognized by UL.



Features and Benefits

- Zierick's **Stable-Lok®** and **Accu-Lok™** mounting features improve the terminal retention of quick disconnect terminals to the PCB.
- Test point terminals offer exceptional designed-in flexibility allowing test engineers to easily attach test probes.
- They are available with **Accu-Lok™** mounting, for maximum PCB retention and solder joint integrity.
- The **Accu-Lok™** feature assures mounting repeatability and reduces the occurrence of fractured terminals.
- Press-fit test points are also available.
- PCB retention is achieved through a controlled splitting and forming of the terminal leg during insertion, preventing extreme hole deformation, hole damage or board warpage commonly caused by traditional press-fit terminal designs.

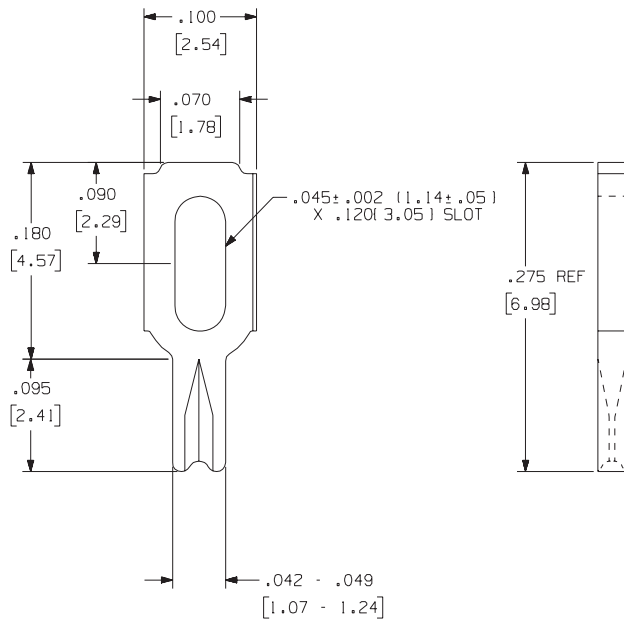


Since the unique design of **Accu-Lok™** mounting is not a press fit, it prevents hole damage and deformity.

The **Accu-Lok™** retentive mounting feature produces exceptional PCB assembly and interconnection integrity. The PCB retention of **Accu-Lok™** mounting is accomplished by a controlled splitting and forming of the terminal leg during insertion.

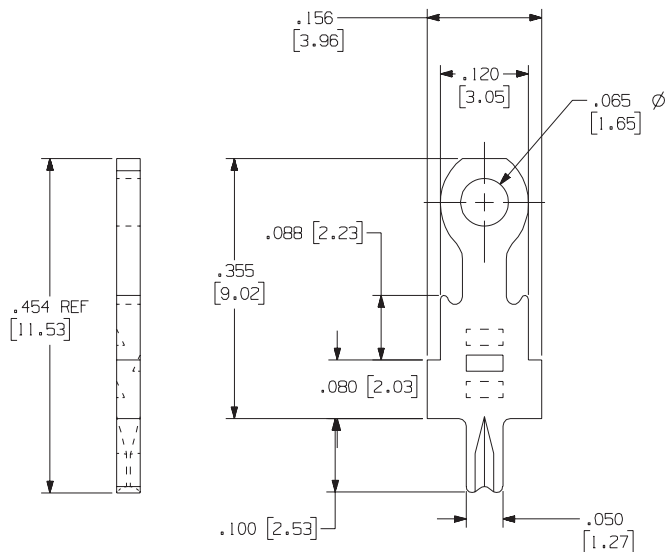


Part Numbers 1069, 6069



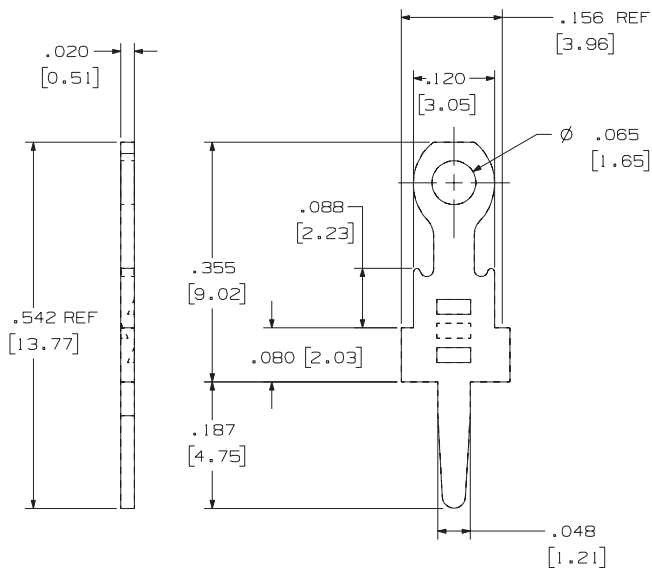
Loose Part No.	1069
Reeled Part No.	6069
Mounting Type	Split Leg Splay
Material Thickness / Type	0.025" (0.64mm) Brass
Standard Finish	Loose: 100% Tin over Copper Reeled: 100% Tin over Copper
Mounting Hole Diameter	0.055" ±0.003" (1.40mm ±0.076)
Current Rating	10 Amperes
Applicator System	Loose: ZPT81-TP Reeled: Model 9700, 9700 XY

Part Numbers 1058, 1059, 6059

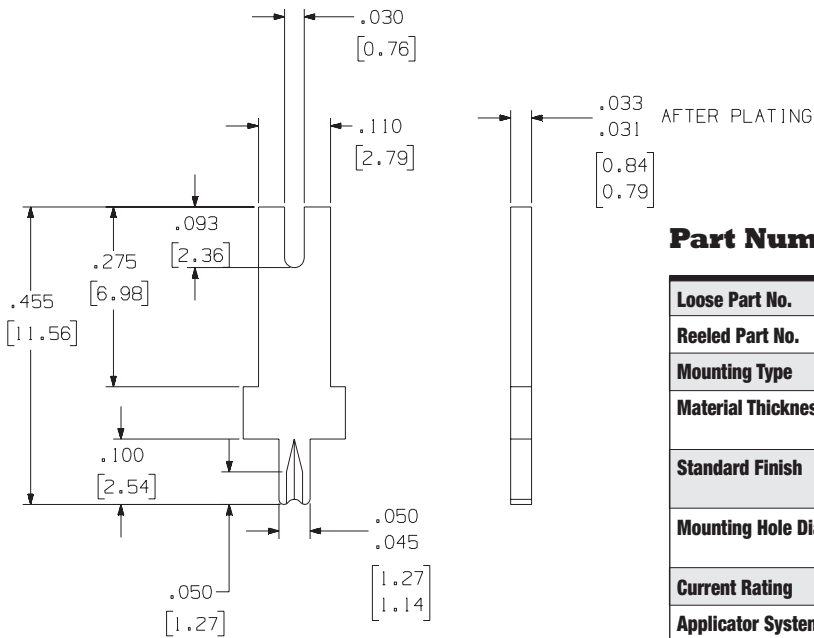


Loose Part No.	1058	1059
Reeled Part No.		6059
Mounting Type	Split Leg Splay	Split Leg Splay
Material Thickness / Type	0.020" (0.51mm) Brass	0.032" (0.81mm) Brass
Standard Finish	Loose: 100% Tin over Copper Reeled: 100% Tin over Copper	
Mounting Hole Diameter	0.046" ±0.003" (1.17mm ±0.076)	0.052" ±0.003" (1.32mm ±0.076)
Current Rating	10 Amperes	
Applicator System	Loose: ZPT81-TP Reeled: Model 9700, 9700 XY	

Part Number 1032



Loose Part No.	1032
Mounting Type	Press-Fit
Material Thickness / Type	0.020" (0.51mm) Brass
Standard Finish	Loose: 100% Tin over Copper
Mounting Hole Diameter	0.046" ±0.003" (1.17mm ±0.076)
Current Rating	10 Amperes
Applicator System	Loose: ZPT81-TP

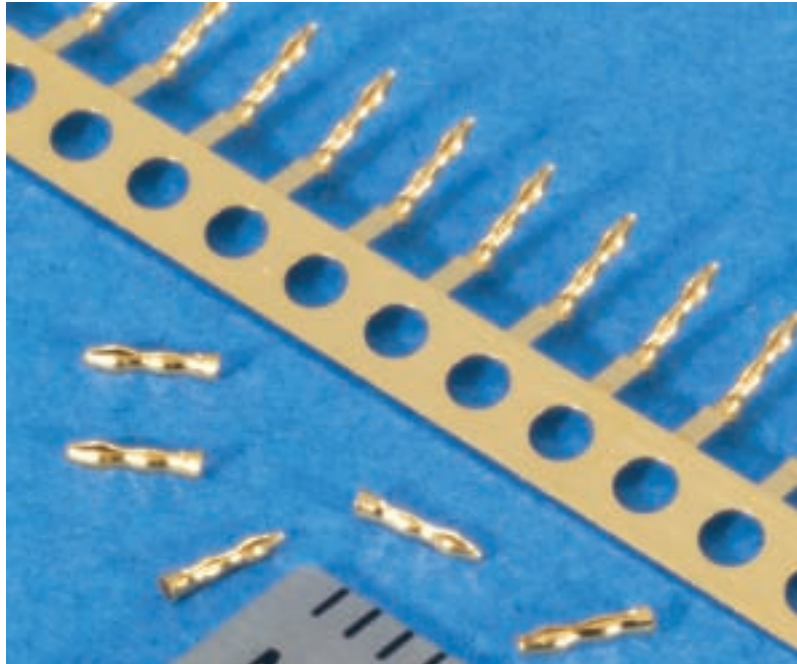


Part Numbers 6050-030, 1049-030

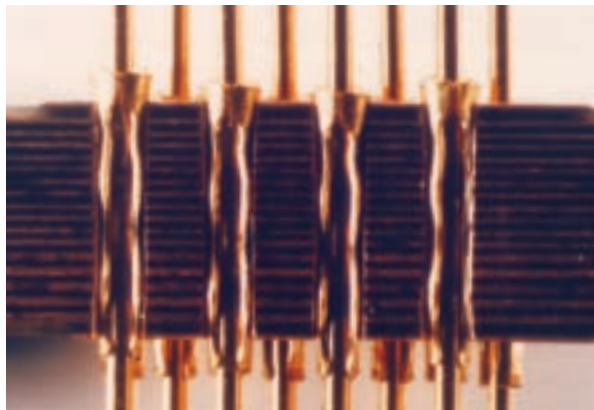
Loose Part No.	N/A	1049-030
Reeled Part No.	6050-030	N/A
Mounting Type	Split Leg Splay	Split Leg Splay
Material Thickness / Type	0.020" (0.51mm) Brass	0.032" (0.81mm) Brass
Standard Finish	Loose: 100% Tin over Copper Reeled: 100% Tin over Copper	
Mounting Hole Diameter	0.050" ±0.003" (1.27mm ±0.076)	0.054" ±0.003" (1.37mm ±0.076)
Current Rating	10 Amperes	
Applicator System	Loose: ZPT81-TP Reeled: Model 9700, 9700 XY	

Features and Benefits

- This connector enables the creation of a three-dimensional circuit by connecting stacked multi-layer circuit boards.
- It is a solderless interconnection system which utilizes pins and internal sockets.
- The system allows a staggered row grid density of 0.50" and a minimum PCB-to-PCB interface of 0.062".
- It accommodates boards with through-holes varying from 0.020" to 0.025" in diameter.
- Continuous format Pro-Wave sockets permit placement by automatic equipment in any number of pin counts on both standard and special grid spacings.

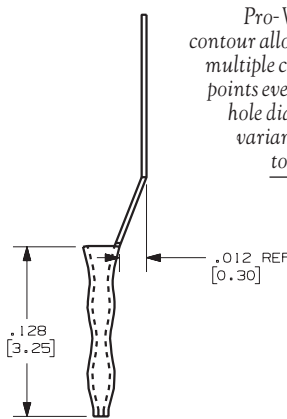
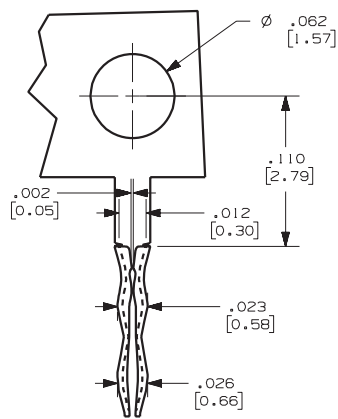
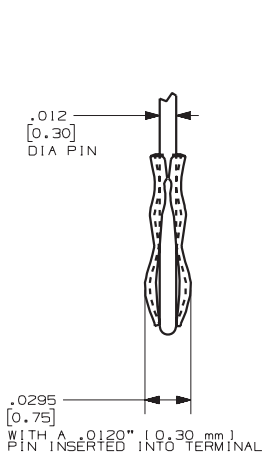


The uniquely shaped Pro-Wave socket fulfills parallel PCB stacking needs in a high-speed matched impedance environment.



Part Number 608213-22

Loose Part No.	608213-22
Material Thickness / Type	0.0035" (0.09mm) Beryllium Copper
Standard Finish	Hard Gold
Mating Pin Diameter	0.012" (0.31mm)
Receiving PCB Hole Diameter	0.020"/0.025" (0.51mm/0.64mm)
PCB Thickness	0.096" min. (2.44mm)



Pro-Wave's contour allows for multiple contact points even with hole diameter variances up to 0.005"

Beryllium copper construction with a hard gold finish ensures dependable performance.

Features and Benefits

- **Accu-Pak™** Box Connectors ensure reliable PCB-to-PCB, PCB-to-Component and PCB-to-Lead Wire interconnections.
- They come with top- or bottom-entry configurations.
- They mate easily with square, round, and rectangular terminals and posts, and are auto insertable.
- Our Box Connectors feature non-destructive beam motion, built-in overstress barriers and offer regular or high retention force configurations.
- Zierick's exclusive **Accu-Pak™** spring technology ensures predictable mating forces with ample stored energy.
- **Accu-Pak™** Connectors are highly resistant to permanent deformation even when misaligned.

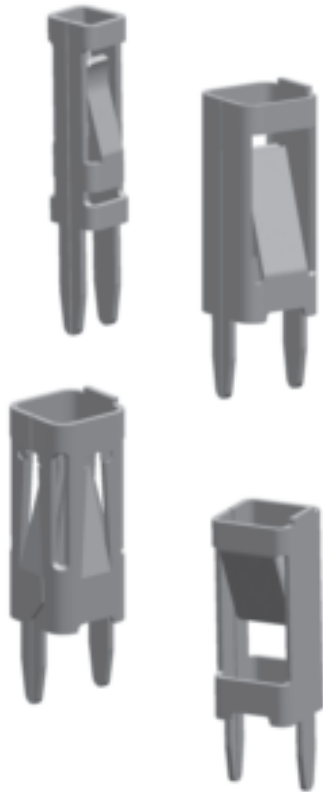


Some of Zierick's **Accu-Pak™** connector line now feature optional technology to prevent solder from wicking onto the internal contact areas during the wave solder process. Zierick's TapeResist solder masking technology is a remarkable advancement for PCB assembly as it utilizes pre-applied 0.001" (0.03mm) thick polyester film as the solder resist agent.

TapeResist allows stamped connectors to withstand internal solder wicking without the need for expensive, nonsolderable

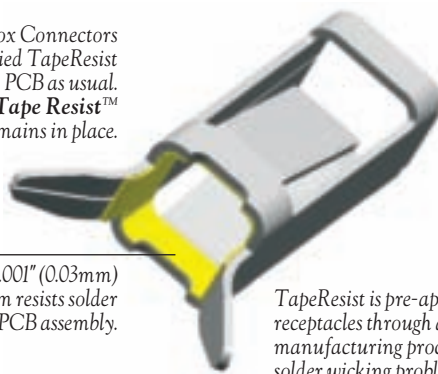
selective plated finishes. Secondary plugging or taping operations are also eliminated. The TapeResist film is precision-applied via an exclusive stamping process which eliminates the secondary processing needed with selective plating.

TapeResist connectors are applied to the PCB and processed in the exact same manner as standard connectors. Once the terminal is placed and soldered, the TapeResist film remains in place. There is no need for specialized preparation or cleaning with TapeResist connectors.

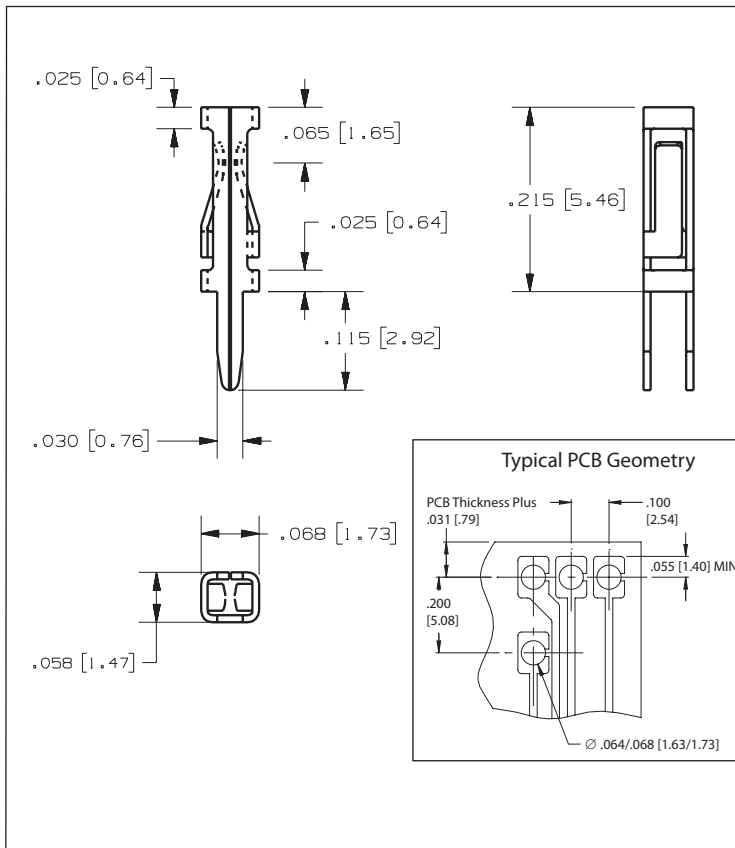


Zierick Box Connectors with pre-applied TapeResist are inserted in the PCB as usual. After soldering, the **Tape Resist™** remains in place.

The 0.001" (0.03mm) thick film resists solder during PCB assembly.



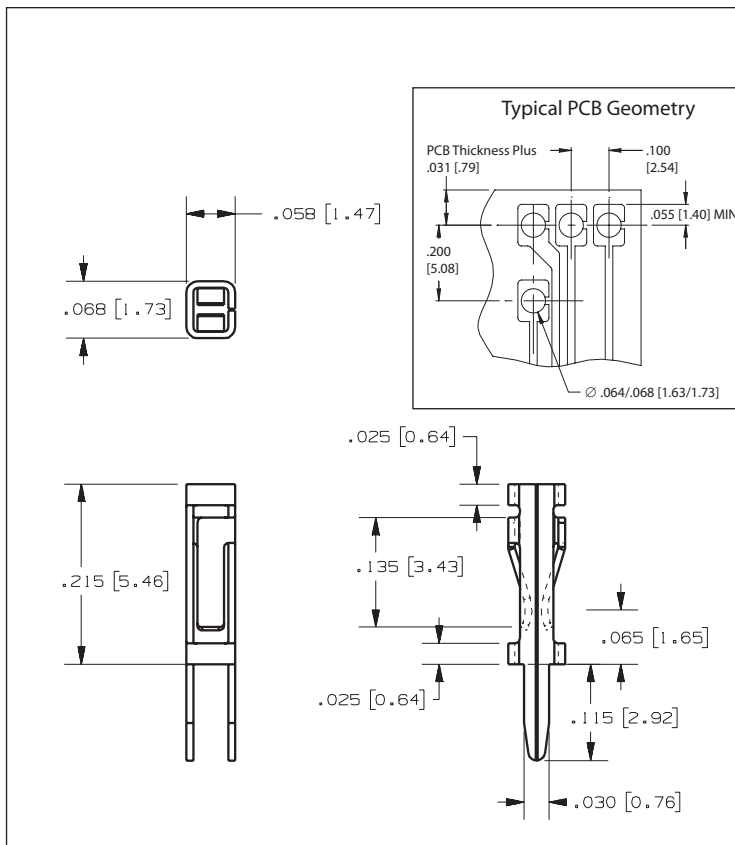
TapeResist is pre-applied to Zierick receptacles through a proprietary manufacturing process to prevent solder wicking problems.



Part Number 6100

Loose Part No.	N/A
Reeled Part No.	6100
Mating Terminal Size	0.025" (0.64mm) Rd. or Sq.
Mounting Type	Outward Splay
Material Thickness / Type	0.008" (0.20mm) Phosphor Bronze
Standard Finish	100% Tin over Copper
Mating Type	Vertical
Mating Entry	Bottom
Current Rating	3 Amperes
Resistance Rating	10mOhm Max
Temperature Rating	-65° to 105°C
Insertion Force-Max.	Application Dependent / Submit Mating Terminal Sample to Factory
Withdrawal Force-Max.	Application Dependent / Submit Mating Terminal Sample to Factory
Applicator System	Model 9700, 9700 XY

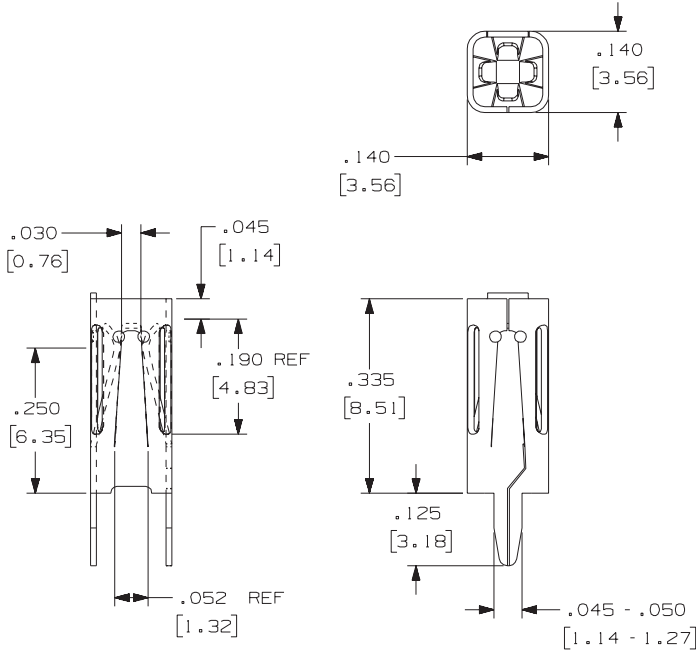
0.025" (0.64mm) Box Receptacles - Top Entry



Part Number 6101

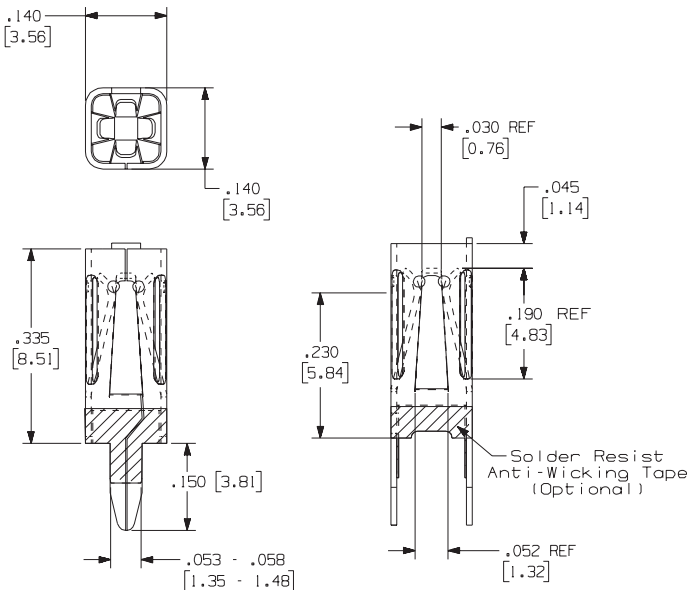
Loose Part No.	N/A
Reeled Part No.	6101
Mating Terminal Size	0.025" (0.64mm) Rd. or Sq.
Mounting Type	Outward Splay
Material Thickness / Type	0.008" (0.20mm) Phosphor Bronze
Standard Finish	100% Tin over Copper
Mating Type	Vertical
Mating Entry	Top
Current Rating	3 Amperes
Resistance Rating	10mOhm Max
Temperature Rating	-65° to 105°C
Insertion Force-Max.	Application Dependent / Submit Mating Terminal Sample to Factory.
Withdrawal Force-Max.	Application Dependent / Submit Mating Terminal Sample to Factory.
Applicator System	Model 9700, 9700 XY

Part Numbers 1062, 6062

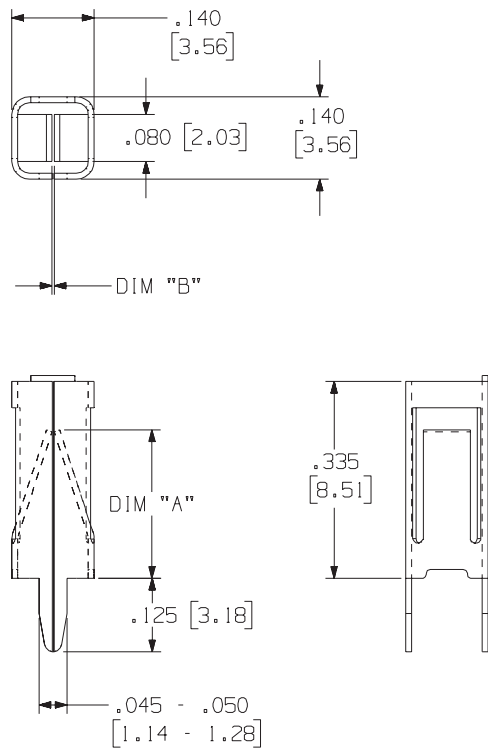


Loose Part No.	1062
Reeled Part No.	6062
Mating Terminal Size	0.045" (1.14mm) and 0.060" (1.52mm) Rd. or Sq.
Mounting Type	Outward Splay
Material Thickness / Type	0.010" (0.25mm) Phosphor Bronze
Standard Finish	Loose: 100% Tin over Copper Reeled: 100% Tin over Copper
Mating Type	Vertical
Mating Entry	Bottom
Mounting Hole Diameter	0.150" ±0.003" (3.81mm ±0.076mm)
Current Rating	10 Amperes
Resistance Rating	10mOhm Max
Temperature Rating	-65° to 105°C
Insertion Force-Max.	Application Dependent / Submit Mating Terminal Sample to Factory.
Withdrawal Force-Max.	Application Dependent / Submit Mating Terminal Sample to Factory.
Applicator System	Reeled: Model 9700, 9700 XY

Part Number 6062-101



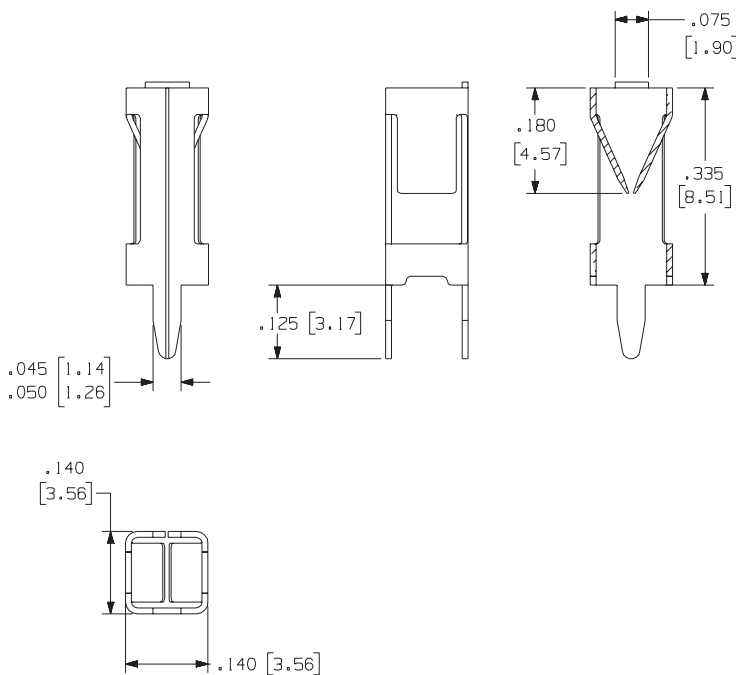
Loose Part No.	N/A
Reeled Part No.	6062-101
TapeResist™	Optional
Mating Terminal Size	0.060" (1.52mm) Rd. or Sq. 0.095" (2.41mm) Rd. or Sq.
Mounting Type	Outward Splay
Material Thickness / Type	0.010" (0.25mm) Phosphor Bronze
Standard Finish	Reeled: 100% Tin over Copper
Mating Type	Vertical
Mating Entry	Bottom
Mounting Hole Diameter	0.150" ±0.003" (3.81mm ±0.076mm)
Current Rating	10 Amperes
Resistance Rating	10mOhm Max
Temperature Rating	-65° to 105°C
Insertion Force-Max.	Application Dependent / Submit Mating Terminal Sample to Factory
Withdrawal Force-Max.	Application Dependent / Submit Mating Terminal Sample to Factory
Applicator System	Reeled: Model 9700, 9700 XY



Part Numbers 1193, 6193, 1200, 6200

Loose Part No.	1193	1200
Reeled Part No.	6193	6200
TapeResist™	Optional (6193-TR)	
Mating Terminal Size	0.025" to 0.095" (0.64mm to 2.41mm) Rd. or Sq.	0.020" to 0.095" (0.51mm to 2.41mm) Rd. or Sq.
Dim A	0.200" (5.08mm)	0.250" (6.35mm)
Dim B	0.015" (0.38mm)	0.003" (0.07mm)
Mounting Type	Outward Splay	
Material Thickness / Type	0.010" (0.25mm) Phosphor Bronze	
Standard Finish	Loose: 100% Tin over Copper Reeled: 100% Tin over Copper	
Mating Type	Vertical	
Mating Entry	Bottom	
Mounting Hole Diameter	0.150" ±0.003" (3.81mm ±0.076mm)	
Current Rating	10 Amperes	
Resistance Rating	10mOhm Max	
Temperature Rating	-65° to 105°C	
Insertion Force-Max.	Application Dependent / Submit Mating Terminal Sample to Factory.	
Withdrawal Force-Max.	Application Dependent / Submit Mating Terminal Sample to Factory.	
Applicator System	Loose: Consult Factory Reeled: Model 9700, 9700 XY	

Top Entry 2 Beam Box Receptacles

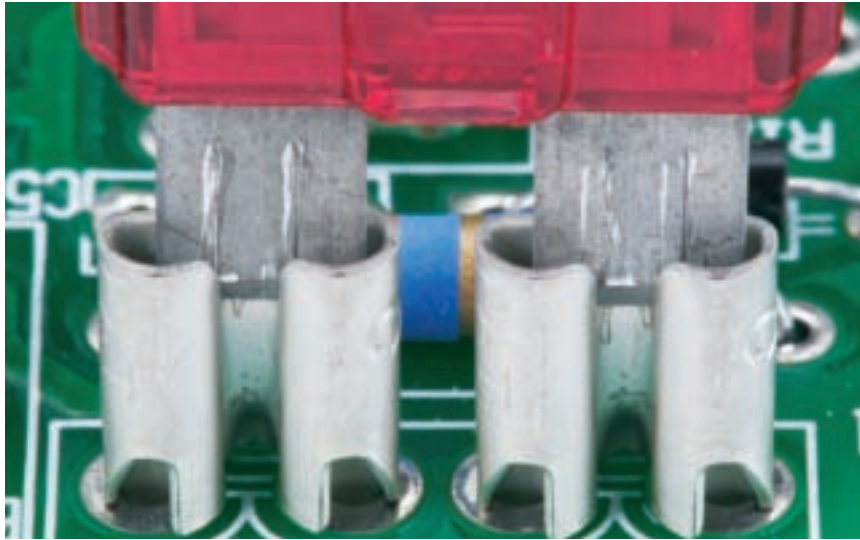


Part Numbers 1187, 6187

Loose Part No.	1187
Reeled Part No.	6187
Mating Terminal Size	0.025" (0.64mm) to 0.095" (2.41mm) Rd. or Sq.
Mounting Type	Outward Splay
Material Thickness / Type	0.010" (0.25mm) Phosphor Bronze
Standard Finish	Loose: 100% Tin over Copper Reeled: 100% Tin over Copper
Mating Type	Vertical
Mating Entry	Top
Mounting Hole Diameter	2 holes 0.050" ±0.003" (3.81mm ±0.076mm) on 0.130" ±0.003" (3.302mm ±0.003mm) centers
Current Rating	10 Amperes
Resistance Rating	10mOhm Max
Temperature Rating	-65° to 105°C
Insertion Force-Max.	Application Dependent / Submit Mating Terminal Sample to Factory.
Withdrawal Force-Max.	Application Dependent / Submit Mating Terminal Sample to Factory.
Applicator System	Loose: Consult factory Reeled: Model 9700, 9700 XY

Features and Benefits

- **Accu-Pak™** receptacles are available in many geometries.
- They provide dependable connections and exhibit exceptional performance.
- The contact spring design ensures predictable mating forces and high resistance to permanent deformation.
- These receptacles mate easily with standard male terminals, posts, and blade or fuse type terminals.
- They withstand repeated mating, shock, vibration, and thermal cycling.
- Options include **Stable-Lok®** mounting.
- PCB assembly can be done manually with Zierick hand tools, or automatically with Zierick semi- and fully-automated applicators.



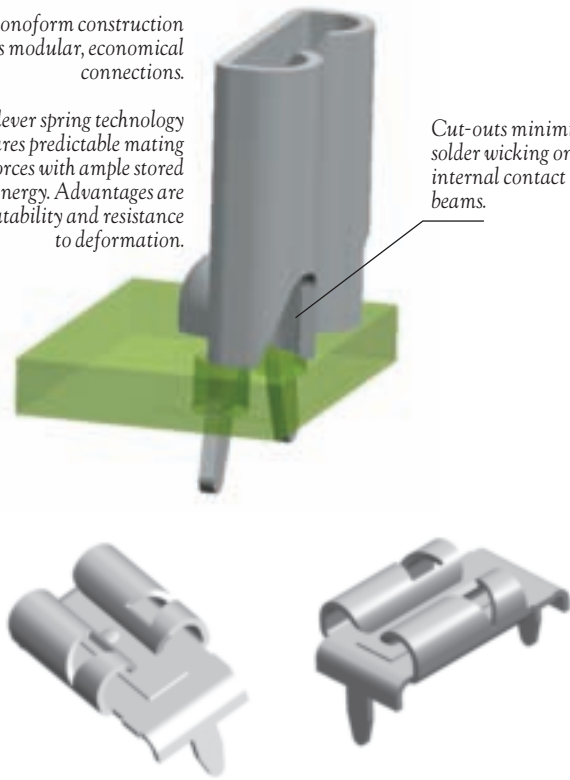
For highly repeatable PCB-to-PCB, PCB-to-Component, PCB-to-Lead Wire, and auto fuse interconnections, **Accu-Pak™** PCB mountable receptacles offer outstanding yet economical performance. Vertical and horizontal configurations are easily accomplished.

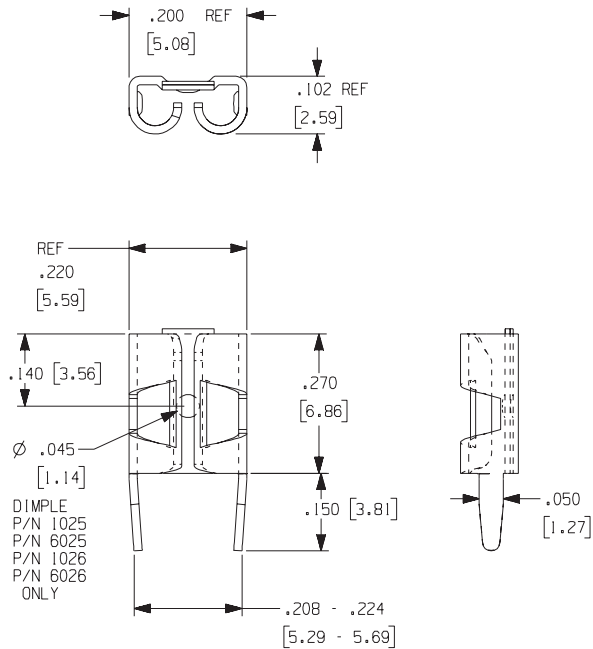


Monoform construction allows modular, economical connections.

Cantilever spring technology ensures predictable mating forces with ample stored energy. Advantages are repeatability and resistance to deformation.

Cut-outs minimize solder wicking onto internal contact beams.

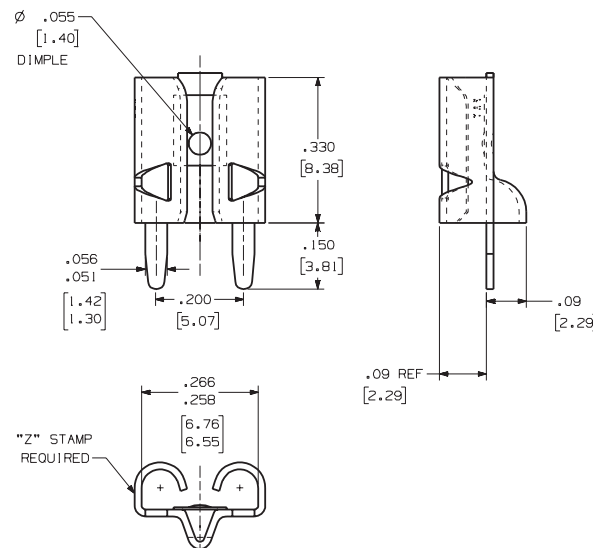




Part Numbers
1241, 6241, 1026, 6026, 1025, 6025

Loose Part No.	1241	1026	1025
Reeled Part No.	6241	6026	6025
Mating Terminal Size	0.187" x 0.015" (4.75mm x 0.38mm) Tab	0.187" x 0.020" (4.75mm x 0.51mm) Tab	0.187" x 0.032" (4.75mm x 0.81mm) Tab
Mounting Type	Outward or Inward Splay		
Material Thickness / Type	0.016" (0.41mm) Brass		
Standard Finish	Loose: 100% Tin over Copper Reeled: 100% Tin over Copper		
Mounting Hole Diameter	2 holes 0.058" ±0.003" (1.473mm ±0.076mm) on 0.200" ±0.003" (5.08mm ±0.076mm) centers		
Current Rating	15 Amperes		
Resistance Rating	10mOhm Max		
Temperature Rating	-65° to 85°C		
Applicator System	Loose: ZPT81-A Reeled: Model 9700, 9700 XY		

0.205" (5.21mm) and 0.250" (6.35mm) Tab Receptacles

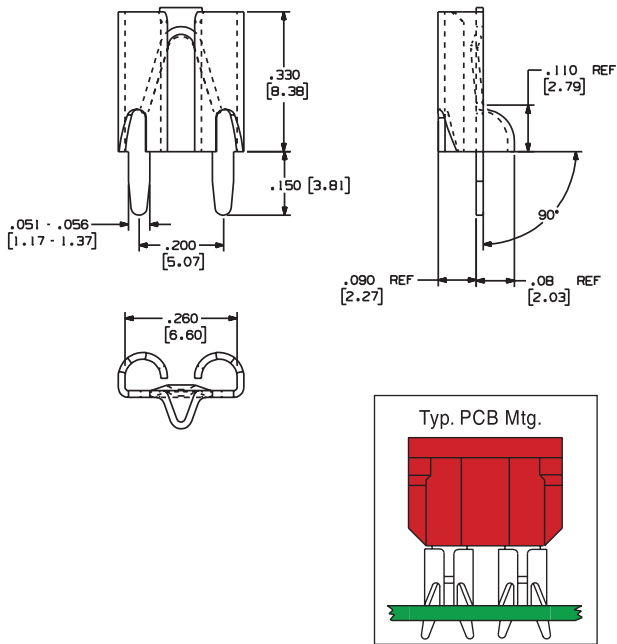


Part Numbers
1022, 6022, 1037, 6037, 1123, 6123

Loose Part No.	1022	1037	1123
Reeled Part No.	6022	6037	6123
Mating Terminal Size	0.250" x 0.032" (6.35mm x 0.81mm) Tab*	0.250" x 0.032" (6.35mm x 0.81mm) Tin/Brass - Tab - (Low Insertion Force)	0.250" x 0.025" (6.35mm x 0.63mm) Tin/Non-Brass - Relays or Fuses - Dual/Multiple Mating
	0.205" x 0.032" (5.21mm x 0.81mm) Tab*	0.205" x 0.032" (5.21mm x 0.81mm) Tin/Brass - Tab - (Low Insertion Force)	0.205" x 0.025" (5.21mm x 0.64mm) Tin/Non-Brass - Relays or Fuses - Dual/Multiple Mating
Mounting Type	Outward or Inward Splay		
Material Thickness / Type	0.016" (0.41mm) Brass		
Standard Finish	Loose: 100% Tin over Copper Reeled: 100% Tin over Copper		
Mating Entry	Top		
Mounting Hole Diameter	0.058" ±0.003" (1.473mm ±0.076mm) on 0.200" ±0.003" (5.08mm ±0.076mm) centers		
Current Rating	20 Amperes*		
Resistance Rating	10mOhm Max		
Temperature Rating	-65° to 85°C		
Applicator System	Loose: ZPT81-A Reeled: Model 9700, 9700 XY		

*With Brass Tab

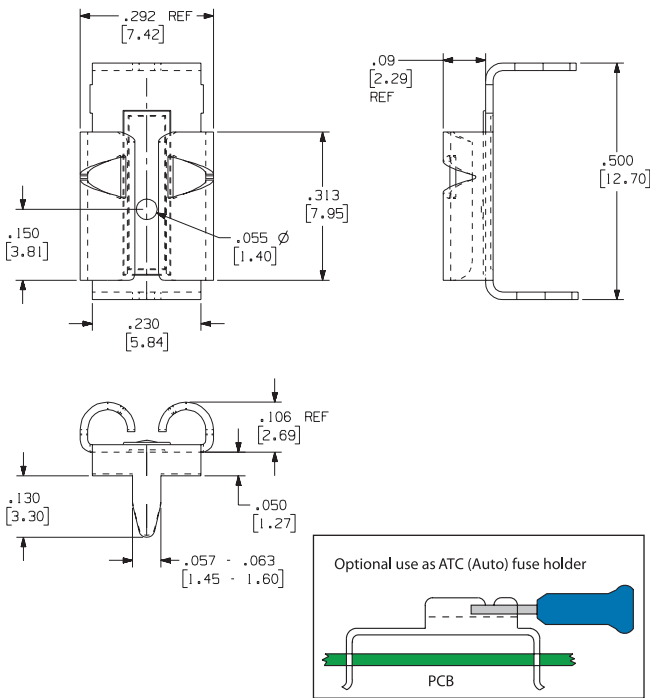
Part Numbers 1154, 6154, 1225, 6225



Loose Part No.	1154	1225
Reeled Part No.	6154	6225
Mating Terminal Size	0.250" x 0.025" (6.35mm x 0.64mm) Tab or Fuse	0.250" x 0.032" (6.35mm x 0.81mm) Tab
Insertion Force-Max.	5.0 lbs. (22.24N)*	10.0 lbs. (44.48N)*
Withdrawal Force-Min.	1.5 lbs. (6.73N)*	
Mounting Type	Outward or Inward Splay	
Material Thickness / Type	0.016" (0.41mm) Brass	
Standard Finish	Loose: 100% Tin over Copper Reeled: 100% Tin over Copper	
Mating Entry	Top	
Mounting Hole Diameter	0.058" ±0.003" (1.473mm ±0.076mm) on 0.200" ±0.003" (5.08mm ±0.076mm) centers	
Current Rating	20 Amperes (with Brass Tab)	
Resistance Rating	10mOhm Max	
Temperature Rating	-65° to 85°C	
Applicator System	Loose: ZPT81-A Reeled: Model 9700, 9700 XY	

*With Steel Test Tab

Note: Insertion/Extraction withdrawal forces may vary when using commercial fuses.

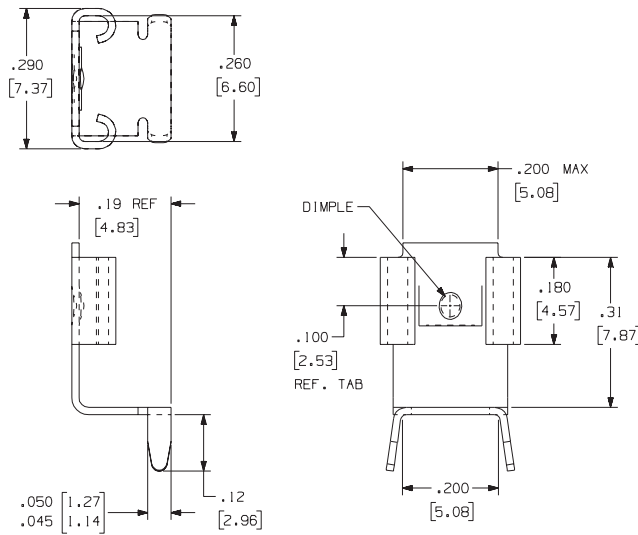


Part Numbers 1093, 1090

Loose Part No.	1093	1090
Mating Terminal Size	0.250" x 0.032" (6.35mm x 0.81mm) Tab	0.250" x 0.025" (6.35mm x 0.64mm) Tab
	0.205" x 0.032" (5.21mm x 0.81mm) Tab	0.205" x 0.025" (5.21mm x 0.64mm) Tab
Insertion Force-Max.	10.0 lbs. (44.48N)*	5.0 lbs. (22.24N)*
Withdrawal Force-Min.	2.0 lbs. (8.90N)*	1.0 lb. (4.45N)*
Mounting Type	Outward or Inward Splay	
Mating Type	Horizontal	
Material Thickness Type	0.016" (0.41mm) Brass	
Standard Finish	Loose: 100% Tin over Copper	
Mating Entry	Horizontal	
Mounting Hole Diameter	2 holes 0.063" ±0.003" (1.6mm ±0.076mm) on 0.500" ±0.003" (12.7mm ±0.076mm) centers	
Current Rating	20 Amperes	
Resistance Rating	10mOhm Max	
Temperature Rating	-65° to 85°C	

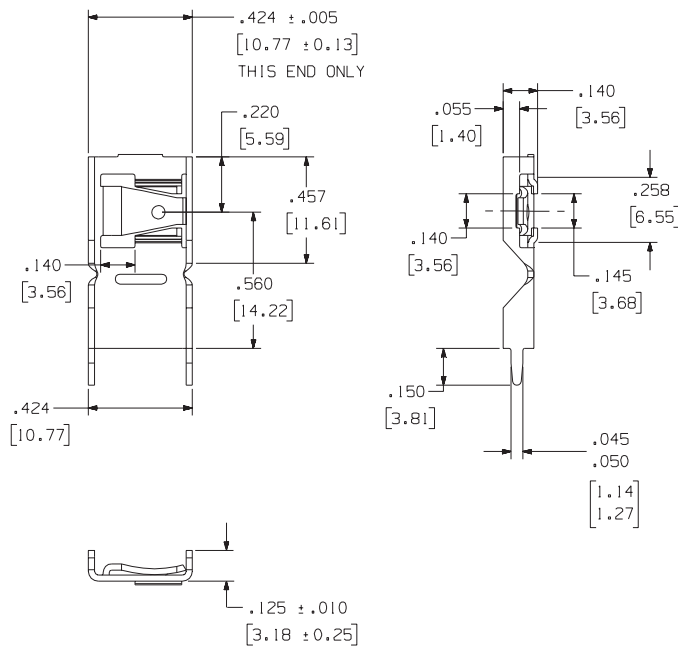
*With Steel Test Tab

Part Numbers 983, 984



Loose Part No.	983	984
Reeled Part No.	N/A	N/A
Mating Terminal Size	0.250" x 0.016" (6.35mm x 0.41mm) Tin/Brass Male	0.250" x 0.032" (6.35mm x 0.81mm) Tin/Brass Male
Mounting Type	Outward or Inward Splay	
Material Thickness / Type	0.015" (0.38mm) Brass	
Standard Finish	100% Tin over Copper	
Mating Type	Vertical	
Mating Entry	Top Side	
Mounting Hole Diameter	2 holes 0.058" ±0.003" (1.473mm ±0.076mm) on 0.200" ±0.005" (5.08mm ±0.127mm) centers	
Current Rating	10 Amperes	15 Amperes
Resistance Rating	10mOhm Max	
Temperature Rating	-65° to 85°C	
Applicator System	Consult Factory	

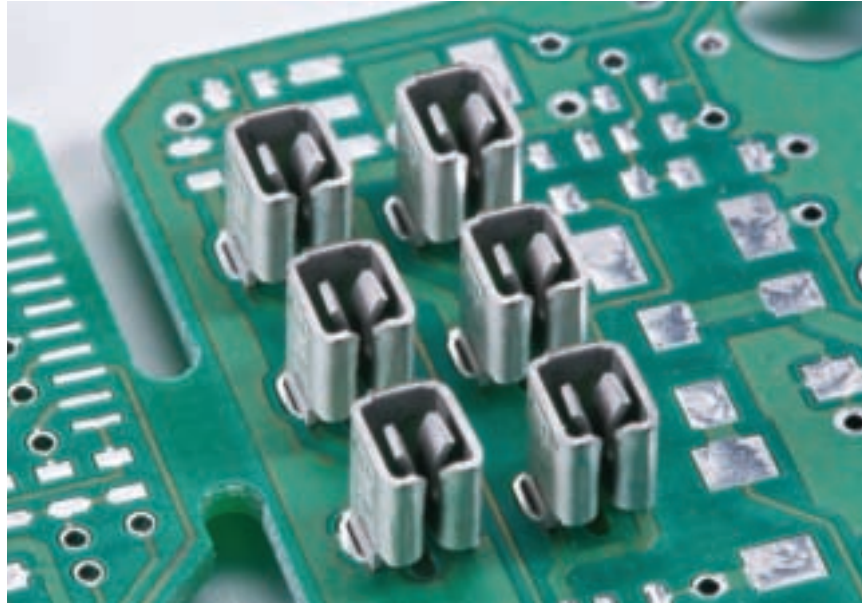
Part Number 6120



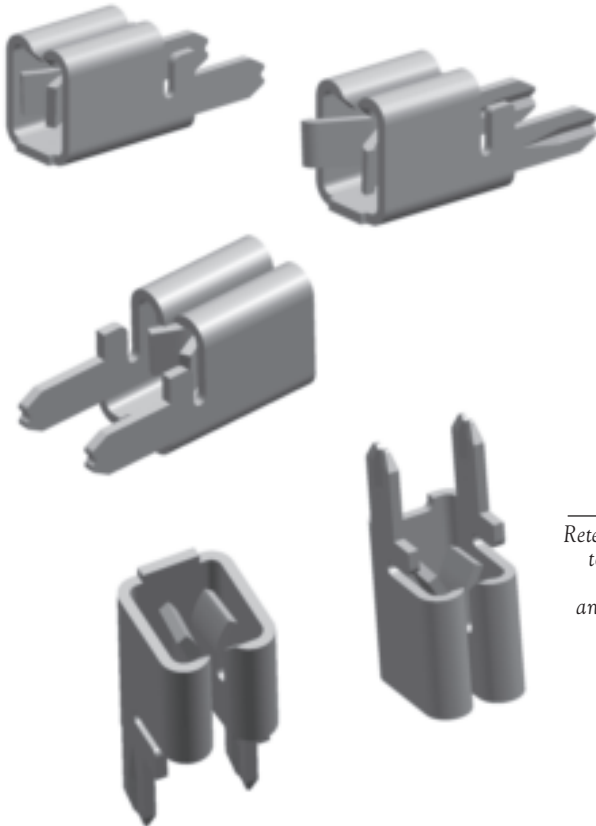
Loose Part No.	N/A
Reeled Part No.	6120
Mating Terminal Size	0.250" x 0.032" (6.35mm x 0.81mm) Tin/Brass Male and Relays Dual/Multiple Matings
Mounting Type	Outward or Inward Splay
Mating Type	Horizontal
Material Thickness / Type	0.025" (0.64mm) Brass
Standard Finish	100% Tin over Copper
Mating Entry	Horizontal
Mounting Hole Diameter	2 holes 0.052" ±0.003" (1.32mm ±0.076mm) on 0.400" ±0.005" (10.16mm ±0.127mm) centers
Current Rating	25 Amperes
Resistance Rating	20mOhm Max
Temperature Rating	-65° to 85°C
Applicator System	Model 9700, 9700 XY Bending Tool: ZPT-1120BT

Features and Benefits

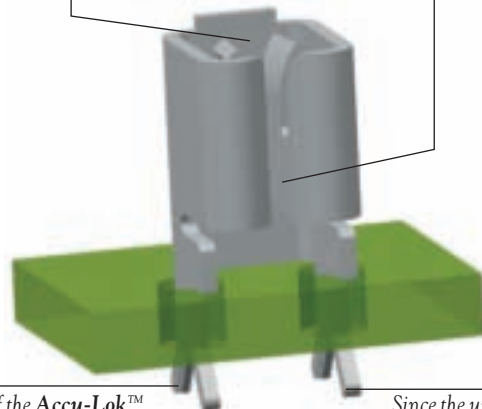
- These Tab Receptacles provide dependable connections and exhibit exceptional performance.
- The contact spring design ensures predictable mating forces and high resistance to permanent deformation.
- These receptacles mate easily with standard male terminals, posts, and blade or fuse type terminals.
- They withstand repeated mating, shock, vibration, and temperature cycling.
- They feature **Accu-Lok™** mounting for maximum PCB retention and solder joint integrity.
- PCB assembly can be done manually with Zierick hand tools, or automatically with Zierick semi- and fully-automated applicators.



These **Accu-Pak™** PCB mountable receptacles are offered in many geometries including vertical, horizontal, parallel, perpendicular and stacking PCB packaging configurations. They offer outstanding yet economical performance.



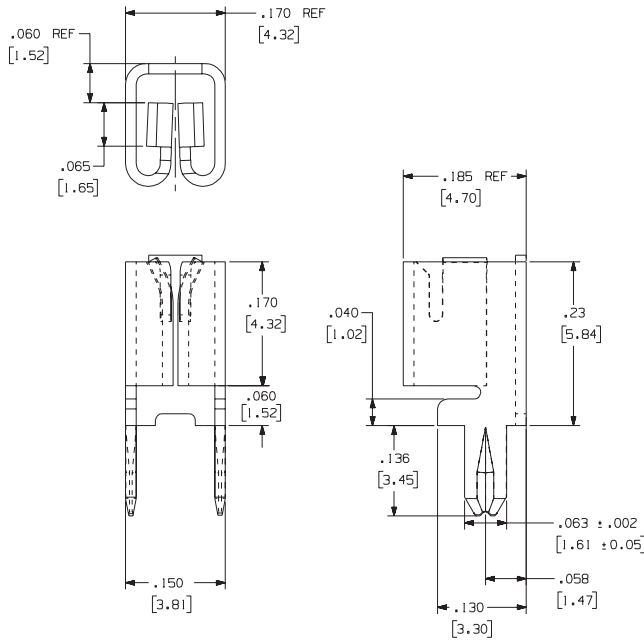
Universal Tab Receptacles can mate with Tabs placed vertically into the top (or bottom of Bottom Entry Receptacles), or perpendicular to the PCB between the two contact beams.



Retention of the **Accu-Lok™** to the PCB is accomplished by a controlled splitting and forming of the terminal leg during insertion.

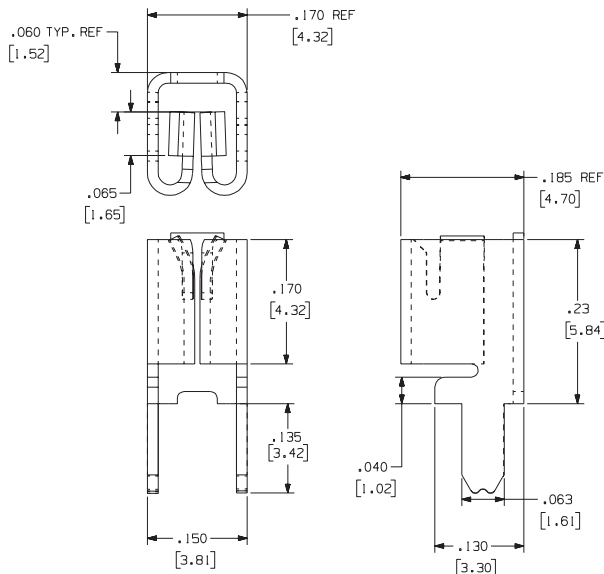
Since the unique design of the **Accu-Lok™** mounting leg is not a press fit, it causes no damage or deformity to the PCB hole.

**Part Numbers 1092, 6092,
1092T-KT, 1274, 1274T, 6274**



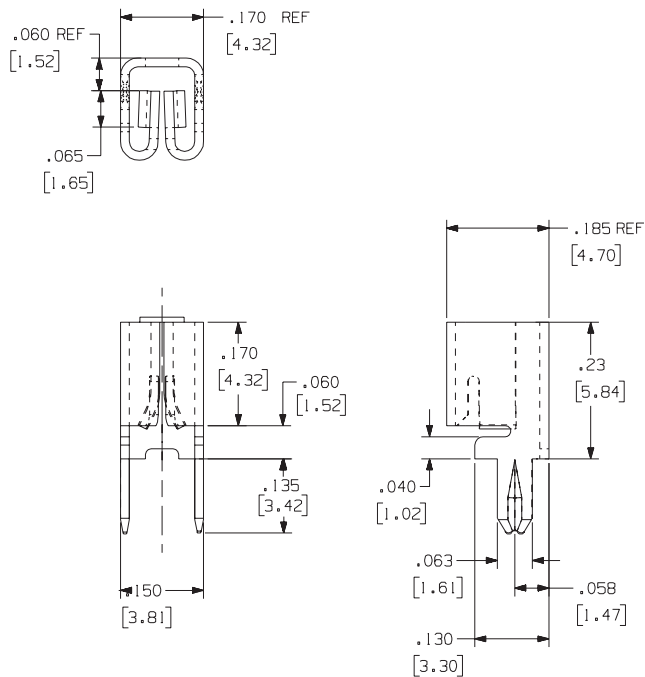
Loose Part No.	1092	1274
Reeled Part No.	6092	6274
Taped Part No.	1092T-KT	1274T
Mating Terminal Size	0.025" (0.64mm) and 0.032" (0.81mm)	0.020" (0.51mm) and 0.032" (0.81mm)
Mounting Type	Split Leg Inward Splay	
Material Thickness / Type	0.016" (0.41mm) Brass	
Standard Finish	Loose: 100% Tin over Copper Reeled: 100% Tin over Copper	
Mating Entry	Top and Horizontal	
Mounting Hole Diameter	2 holes 0.066" ±0.003" (1.68mm ±0.76mm) on 0.134" ±0.003" (3.40mm ±0.76mm) centers	
Current Rating	20 Amperes	
Resistance Rating	10mOhm Max	
Temperature Rating	-65° to 85°C	
Applicator System	Loose: ZPT81-1092 Reeled: Model 9700, 9700 XY	

Part Numbers 1290, 6290



Loose Part No.	1290
Reeled Part No.	6290
Mating Terminal Size	0.025" (0.64mm) and 0.032" (0.81mm)
Mounting Type	Inward or Outward Splay
Material Thickness / Type	0.016" (0.41mm) Brass
Standard Finish	Loose: 100% Tin over Copper Reeled: 100% Tin over Copper
Mating Entry	Top and Horizontal
Mounting Hole Diameter	2 holes 0.066" ±0.003" (1.68mm ±0.76mm) on 0.134" ±0.003" (3.40mm ±0.76mm) centers
Current Rating	20 Amperes
Resistance Rating	10mOhm Max
Temperature Rating	-65° to 85°C
Applicator System	Loose: ZPT81-1092 Reeled: Model 9700, 9700 XY

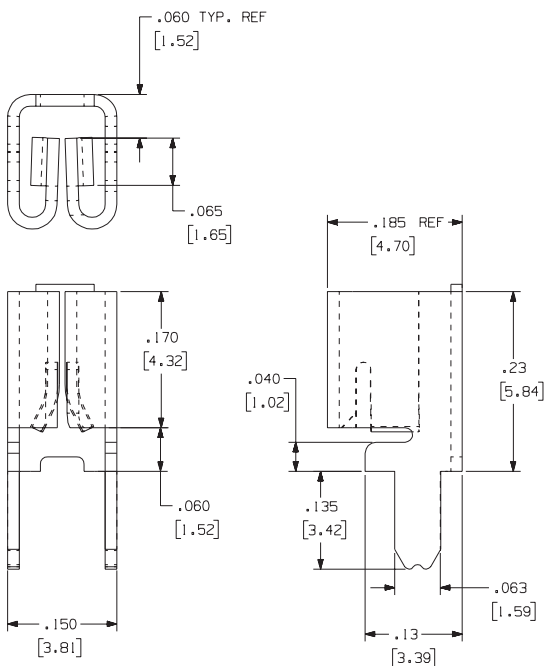
Universal Tab Receptacles for 0.025" (0.64mm) and 0.032" (0.81mm) Thick Terminals



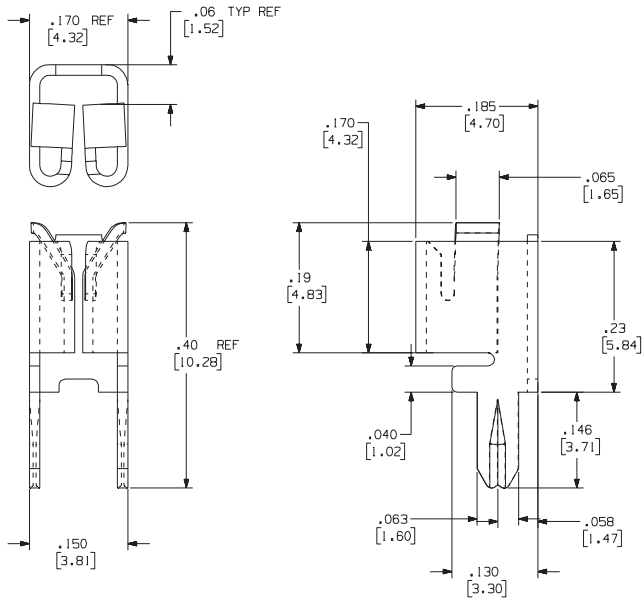
Part Numbers 1118, 1118T, 6118, 1188, 6188

Loose Part No.	1118	1188
Reeled Part No.	6118	6188
Taped Part No.	1118T	N/A
Mating Terminal Size	0.025" (0.64mm) and 0.032" (0.81mm)	0.015" (0.38mm) and 0.025" (0.64mm)
Mounting Type	Split Leg Outward Splay	
Material Thickness / Type	0.016" (0.41mm) Brass	
Standard Finish	Loose: 100% Tin over Copper Reeled: 100% Tin over Copper	
Mating Type	Bottom and Horizontal	
Mounting Hole Diameter	2 holes 0.066" ±0.003" (1.68mm ±0.76mm) on 0.134" ±0.003" (3.40mm ±0.76mm) centers	
Current Rating	20 Amperes	
Resistance Rating	10mOhm Max	
Temperature Rating	-65° to 85°C	
Applicator System	Loose: ZPT81-1092 Reeled: Model 9700, 9700 XY	

Part Numbers 1288, 6288



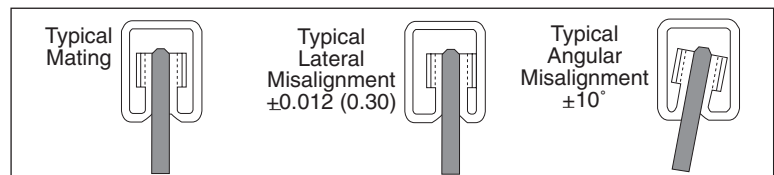
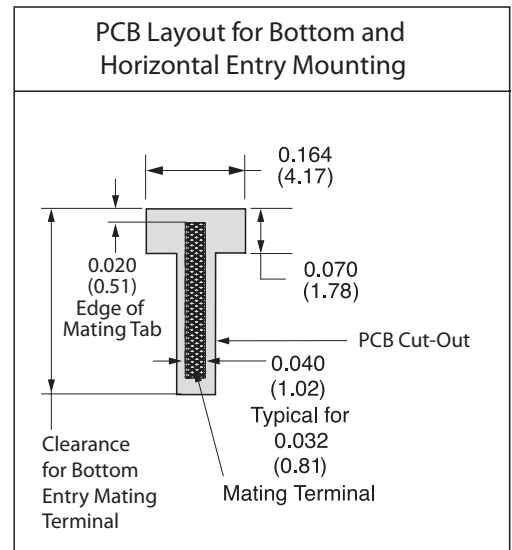
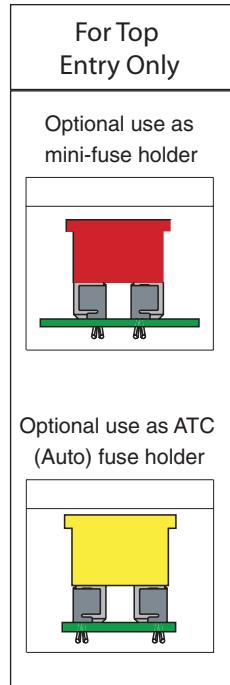
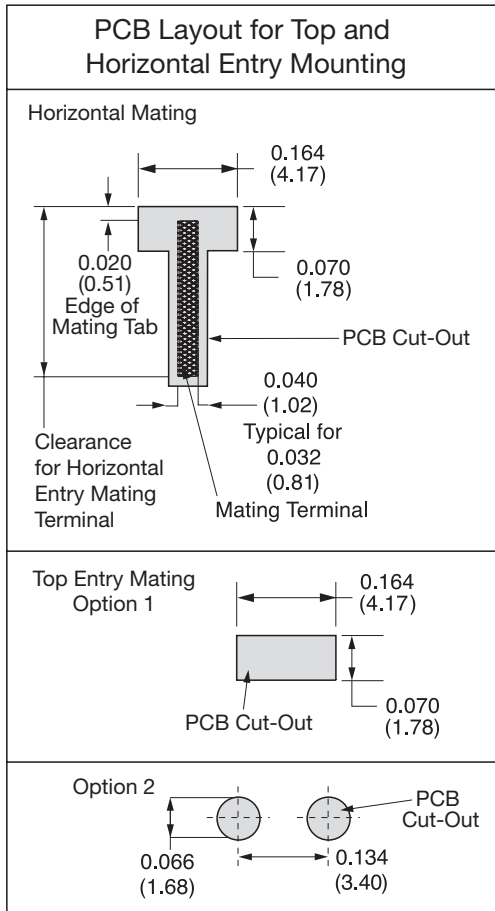
Loose Part No.	1288
Reeled Part No.	6288
Mating Terminal Size	0.015" (0.38mm) and 0.025" (0.64mm)
Mounting Type	Inward or Outward Splay
Material Thickness / Type	0.016" (0.41mm) Brass
Standard Finish	Loose: 100% Tin over Copper Reeled: 100% Tin over Copper
Mating Type	Bottom and Horizontal
Mounting Hole Diameter	2 holes 0.066" ±0.003" (1.68mm ±0.76mm) on 0.134" ±0.003" (3.40mm ±0.76mm) centers
Current Rating	20 Amperes
Resistance Rating	10mOhm Max
Temperature Rating	-65° to 85°C
Applicator System	Loose: ZPT81-1092 Reeled: Model 9700, 9700 XY



Part Numbers 1299, 6299

Loose Part No.	1299
Reeled Part No.	6299
Mating Terminal Size	0.015" (0.38mm) and 0.025" (0.64mm)
Mounting Type	Split Leg Inward Splay
Material Thickness / Type	0.016" (0.41mm) Brass
Standard Finish	Loose: 100% Tin over Copper Reeled: 100% Tin over Copper
Mating Type	Bottom and Horizontal
Mounting Hole Diameter	2 holes 0.066" ±0.003" (1.68mm ±0.76mm) on 0.134" ±0.003" (3.40mm ±0.76mm) centers
Current Rating	20 Amperes
Resistance Rating	10mOhm Max
Temperature Rating	-65° to 85°C
Applicator System	Loose: ZPT81-1092 Reeled: Model 9700, 9700 XY

Recommended PCB Layouts for Universal Tab Receptacles



Features and Benefits

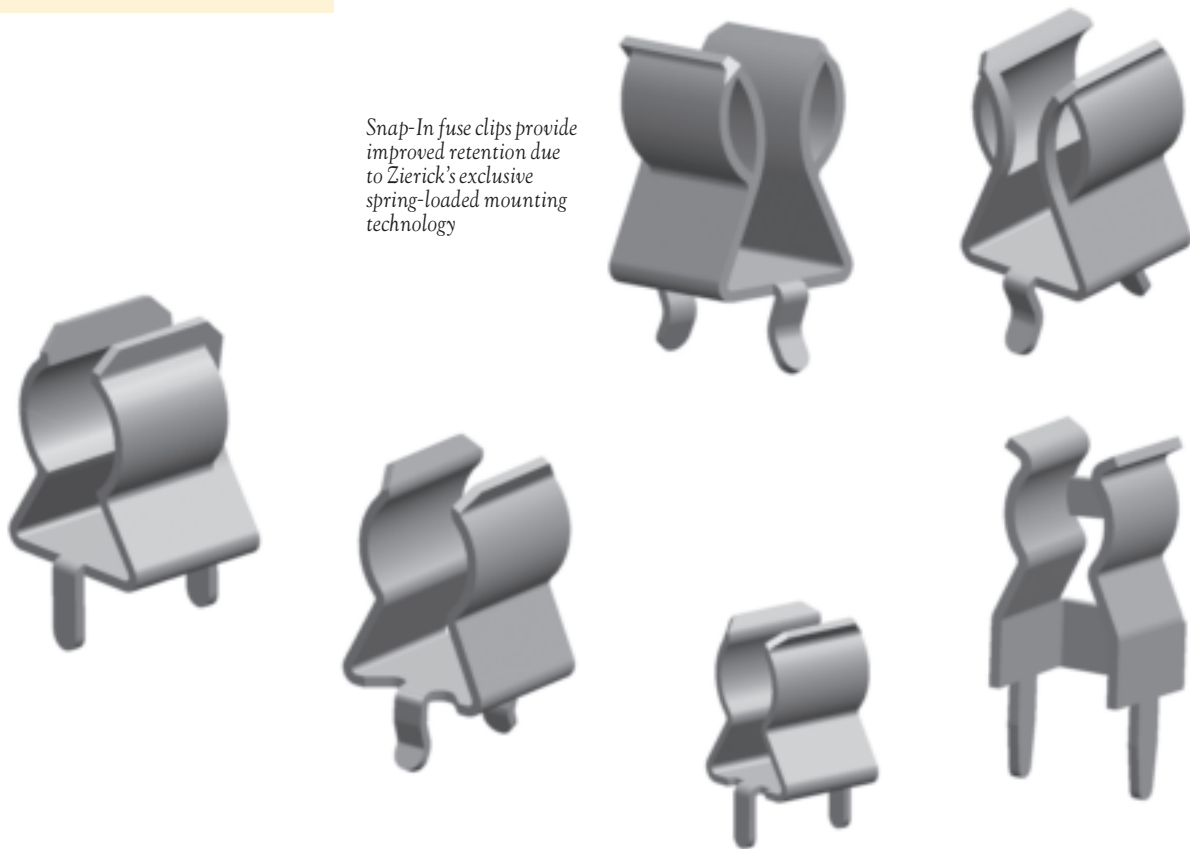
- Zierick's Snap-In fuse clips ensure reliable mounting through the incorporation of a spring-loaded mounting leg.
- Snap-In terminals will withstand side loading and rough PCB handling.
- The Snap-In feature is especially useful with manually inserted and robotic assembly applications where an extremely low terminal mounting force is required.
- Both Snap-In and standard fuse clips are available for 1/4" (6.35mm) and 0.197" (5mm) cylindrical fuse sizes.

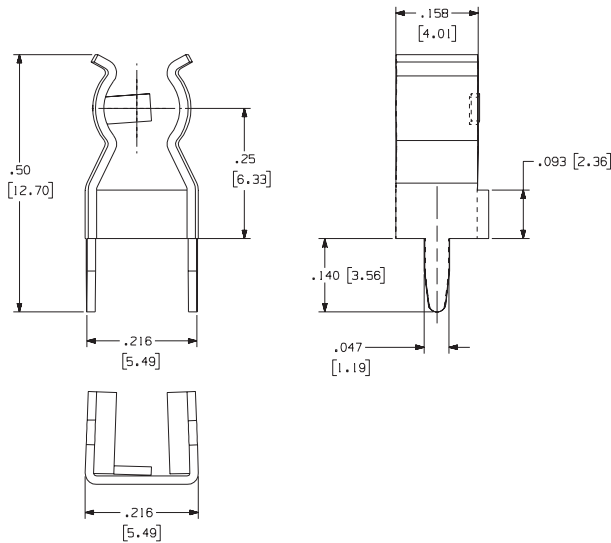


Zierick's exclusive Snap-In PCB fuse mounting technology features a spring-loaded mounting leg which enhances PCB quality and reliability. When inserted in a PCB, Snap-In terminals exhibit

increased retention, strength, and durability. Snap-In and standard fuse clips are available in loose piece format, with or without integral fuse stops.

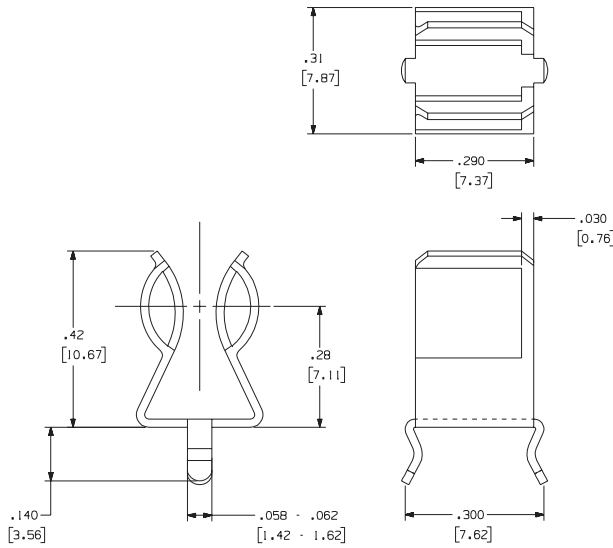
Snap-In fuse clips provide improved retention due to Zierick's exclusive spring-loaded mounting technology





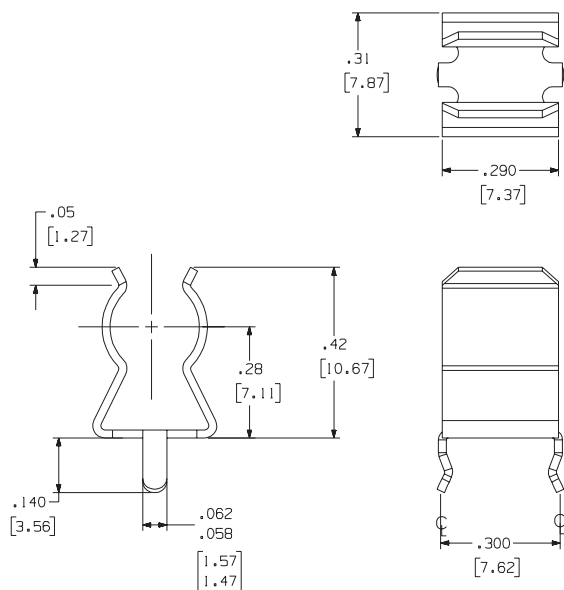
Part Number 990

Loose Part No.	990
Fuse Size	0.197" (5mm)
Fuse Receptacle Type	With Fuse Stop
Material Thickness / Type	0.016" (0.41mm) Brass
Standard Finish	100% Tin over Copper
Mounting Hole Diameter	0.052" (1.32mm)
Current Rating	15 Amperes



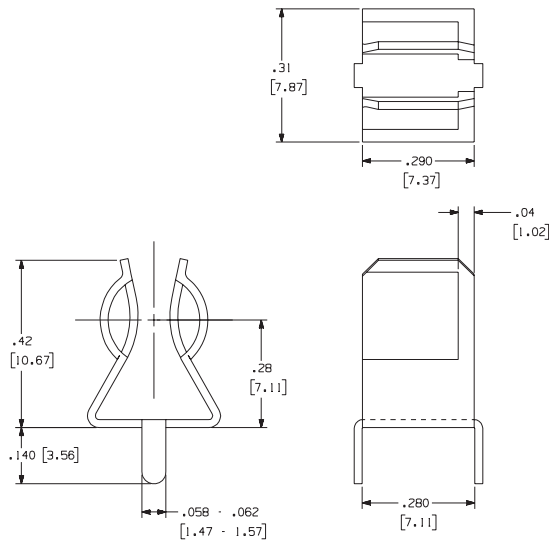
Part Number 1047

Loose Part No.	1047
Fuse Size	1/4" (6.35mm)
Fuse Receptacle Type	With Fuse Stop
Material Thickness / Type	0.020" (0.51mm) Brass
Standard Finish	100% Tin over Copper
Current Rating	15 Amperes
Mounting Hole Diameter	0.067" (1.70mm)



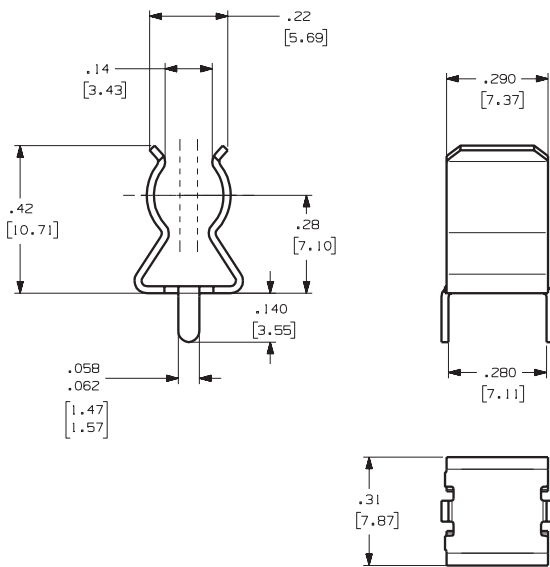
Part Number 1048

Loose Part No.	1048
Fuse Size	1/4" (6.35mm)
Fuse Receptacle Type	Without Fuse Stop
Material Thickness / Type	0.020" (0.51mm) Brass
Standard Finish	100% Tin over Copper
Current Rating	15 Amperes
Mounting Hole Diameter	0.067" (1.70mm)



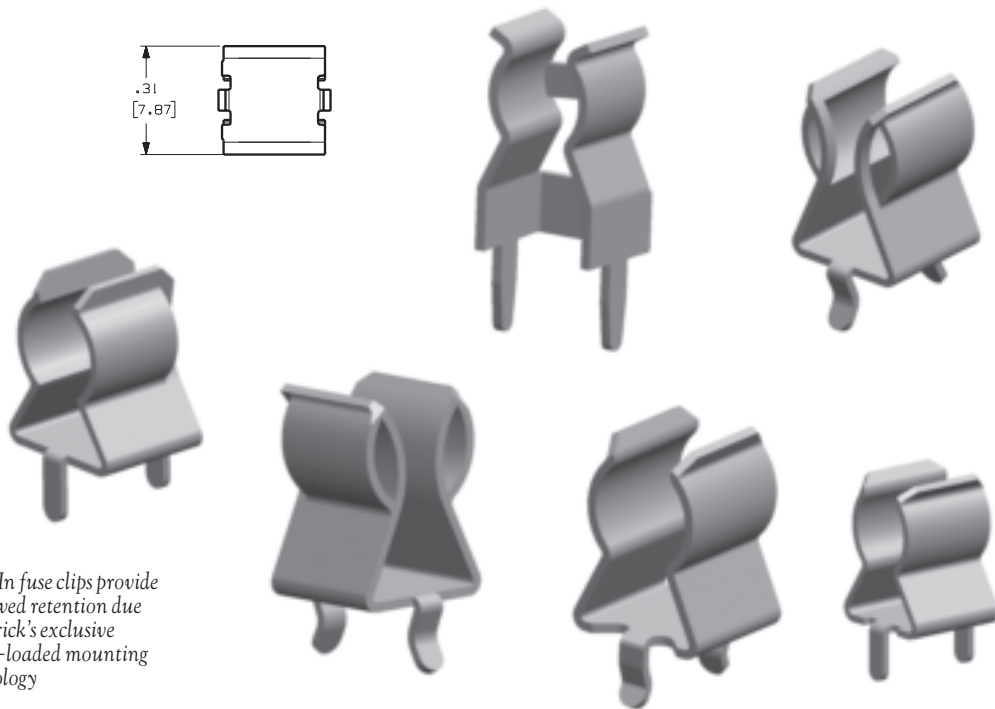
Part Number 926

Loose Part No.	926
Fuse Size	1/4" (6.35mm)
Fuse Receptacle Type	With Fuse Stop
Material Thickness / Type	0.020" (0.51mm) Brass
Standard Finish	100% Tin over Copper
Mounting Hole Diameter	0.067" (1.70mm)
Current Rating	15 Amperes



Part Number 927

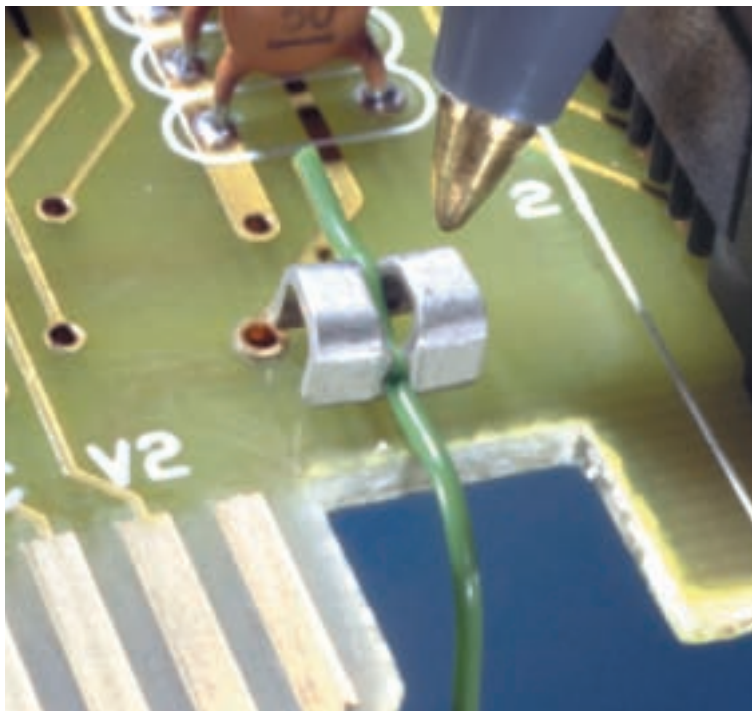
Loose Part No.	927
Fuse Size	1/4" (6.35mm)
Fuse Receptacle Type	Without Fuse Stop
Material Thickness / Type	0.020" (0.51mm) Brass
Standard Finish	100% Tin over Copper
Mounting Hole Diameter	0.067" (1.70mm)
Current Rating	15 Amperes



Snap-In fuse clips provide improved retention due to Zierick's exclusive spring-loaded mounting technology

Features and Benefits

- Zierick's **Torsion-Lok™** IDC allows connection and insulation shear in one motion, eliminating pre-stripping.
- These IDC's provide superior performance compared to rigid contact beam IDC styles.
- They can be a cost-effective wire connection alternative.
- The high-deflection contact beam design withstands repeated mating cycles and harsh conditions such as extreme shock and vibration.
- The **Torsion-Lok™** design provides a predictable, pre-loaded connection force.
- The torsion beams provide ample stored energy and are highly resistant to permanent deformation and stress relaxation.
- The gas-tight interconnection is maintained without wire creep and slip.



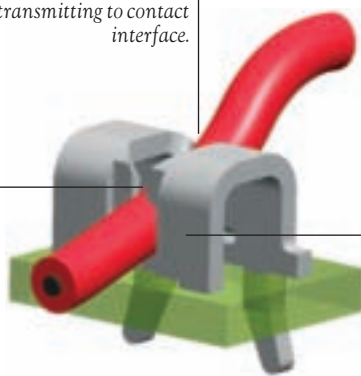
The **Torsion-Lok™** IDC received the PMA-Higgins Design Award based on its ability to deliver exceptional performance while saving costs. Designed for rigorous PCB and wire-end connection requirements, **Torsion-Lok™** IDC's out-perform traditional rigid contact beam IDC styles. Unlike a rigid IDC, the **Torsion-Lok™** permits a high degree of movement by the connection contacts. This

greater movement allows a contact beam deflection range that is many times greater than traditional IDC's. Connection is achieved by simply pushing the wire into the high deflection, zero-clearance connection slot for a reliable, gas-tight connection. This IDC is a cost-effective method of wire connection, providing exceptional flexibility and superior performance compared to traditional rigid contact beam IDC styles.

Built-in wire strain relief prevents wire motion from transmitting to contact interface.

Unlike rigid contact beam styles providing only one-time use, **Torsion-Lok™** beams allow ample movement for repeated mating.

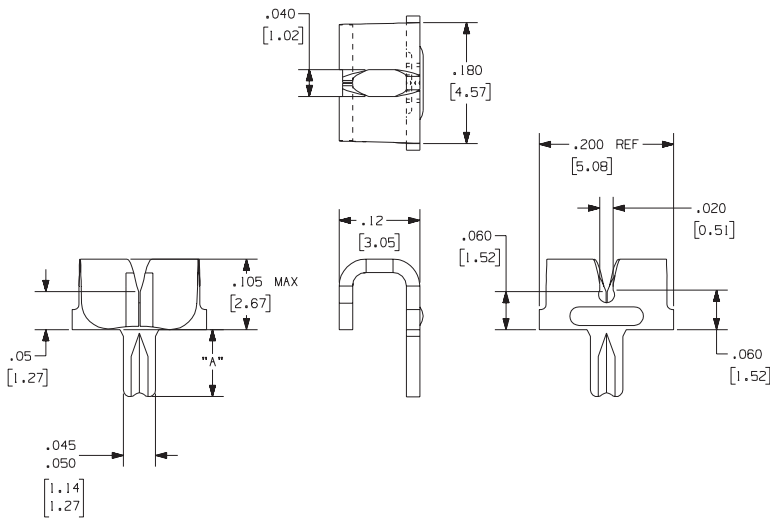
Insulation is cut with wire insertion, eliminating pre-stripping.



Continuous clamping provides a gas-tight interconnection.

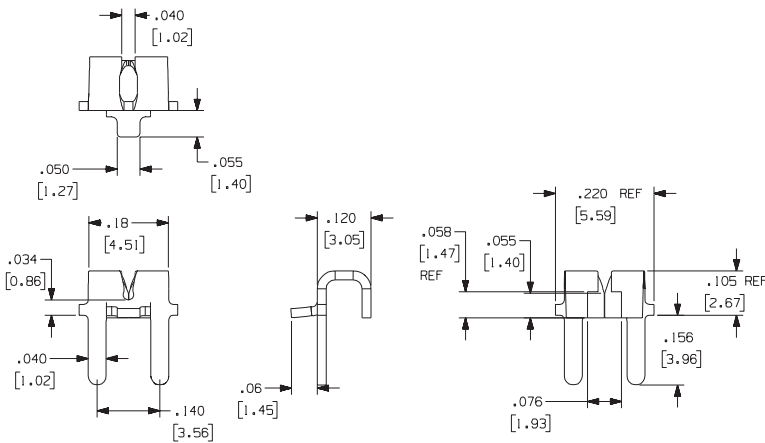
Zierick's family of **Torsion-Lok™** IDC's are available in loose and reeled formats for #30 through #14 AWG solid or stranded wire sizes. PCB and wire assembly can be done manually with Zierick hand tools and fixtures or automatically with Zierick semi- and fully-automated applicator systems.

Part Numbers 1182, 1183, 6183

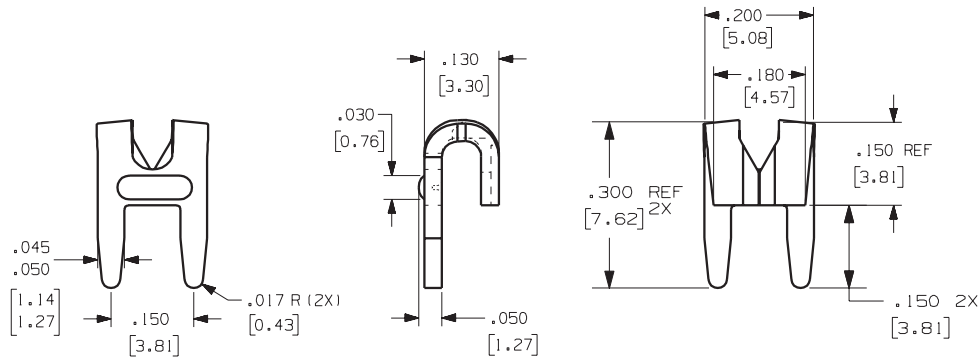


Loose Part No.	1182	1183
Reeled Part No.		6183
Mounting Type	Split Leg Splay for 0.031" (0.79mm) thick PCB	Split Leg Splay for 0.062" (1.57mm) thick PCB
Material Thickness / Type	0.020" (0.51mm) Brass	
Standard Finish	Loose: 100% Tin over Copper Reeled: 100% Tin over Copper	
Wire Gauge Range	#30-26 AWG	
Mounting Hole Diameter	Single Hole 0.055" ±0.003" (1.40mm ±0.076mm)	
Current Rating	10 Amperes	
"A" Dim	0.070" (1.78mm)	0.100" (2.54mm)
Applicator System	Loose: WTP-4ALL Reeled: Model 9700, 9700 XY Wire Termination: Consult factory.	

Part Number 6114



Loose Part No.	N/A
Reeled Part No.	6114
Mounting Type	Outward or Inward Splay Surface Mount Solder 0.062" (1.57mm) thick PCB
Material Thickness / Type	0.020" (0.51mm) Brass
Standard Finish	Loose: 100% Tin over Copper Reeled: 100% Tin over Copper
Wire Gauge Range	#30-26 AWG
Mounting Hole Diameter	2 holes 0.050" ±0.003" (1.27mm ±0.076mm) on 0.140" (3.56mm) centers
Current Rating	10 Amperes
Applicator System	Loose: ZPT-1114 Reeled: Model 9700, 9700 XY Wire Termination: Consult factory.

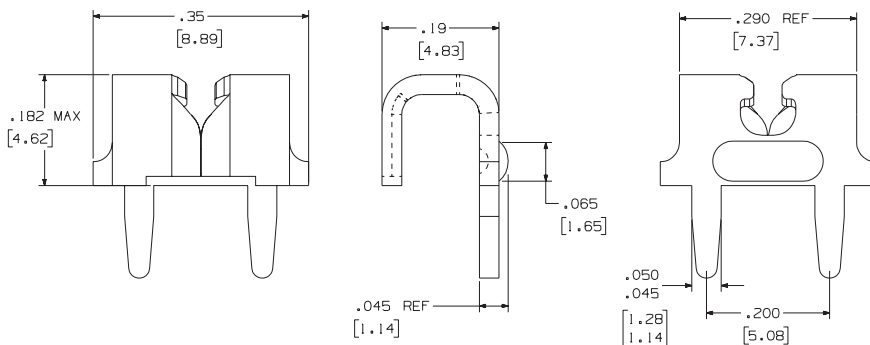
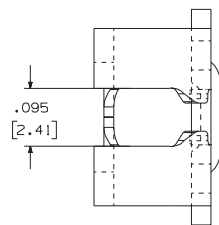


Part Numbers 1119, 6119

Loose Part No.	1119
Reeled Part No.	6119
Mounting Type	Outward or Inward Splay 0.062" (1.57mm) thick PCB
Material Thickness / Type	0.032" (0.81mm) Brass
Standard Finish	Loose: 100% Tin over Copper Reeled: 100% Tin over Copper
Wire Gauge Range	#24-18 AWG
Mounting Hole Diameter	2 holes 0.058" ±0.003" (1.47mm ±0.076) on 0.150" (3.81mm) centers
Current Rating	30 Amperes
Applicator System	Loose: WTP-4ALL Reeled: Model 9700, 9700 XY Wire Termination: Consult factory.

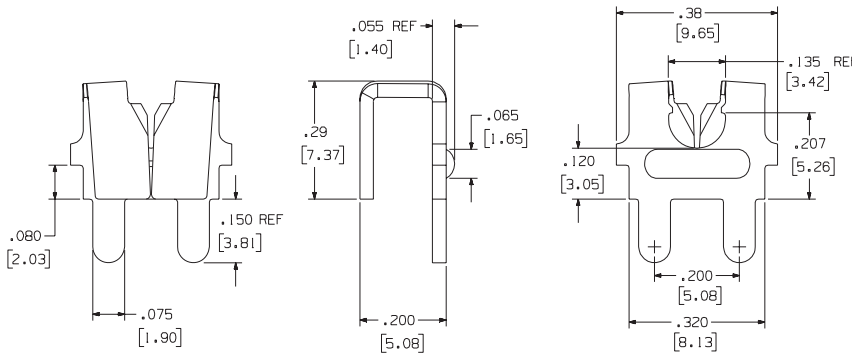
Part Number 1039

Loose Part No.	1039
Reeled Part No.	N/A
Mounting Type	Outward or Inward Splay 0.062" (1.57mm) thick PCB
Material Thickness / Type	0.032" (0.81mm) Brass
Standard Finish	Loose: 100% Tin over Copper Reeled: 100% Tin over Copper
Wire Gauge Range	#24-18 AWG
Mounting Hole Diameter	2 holes 0.058" ±0.003" (1.47mm ±0.076) on 0.200" (5.08mm) centers
Current Rating	20 Amperes
Applicator System	Loose: WTP-4ALL Reeled: Model 9700, 9700 XY Wire Termination: Consult factory.



Part Numbers 1174, 6174

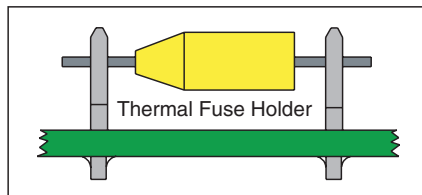
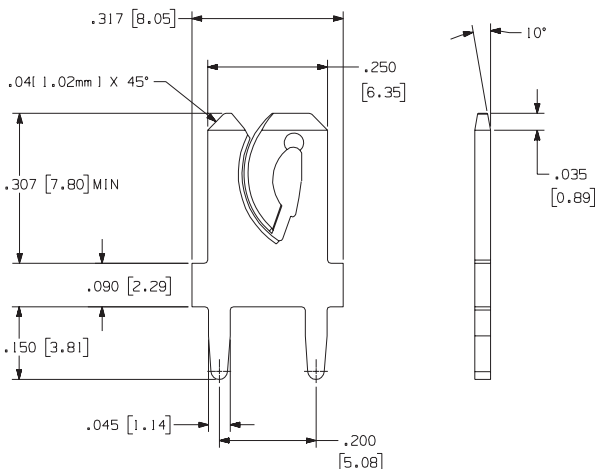
Loose Part No.	1174
Reeled Part No.	6174
Mounting Type	Outward or Inward Splay
Material Thickness / Type	0.032" (0.81mm) Brass
Standard Finish	Loose: 100% Tin over Copper Reeled: 100% Tin over Copper
Wire Gauge Range	#16-14 AWG
Mounting Hole Diameter	2 holes 0.080" ±0.003" (2.03mm ±0.076mm) on 0.200" (5.08mm) centers
Current Rating	20 Amperes
Applicator System	Loose: WTW-1174 Reeled: Model 9700, 9700 XY Wire Termination Tool: WTPPL-1174-1



IDC / Quick Disconnect Tab For #24-18 AWG Wire

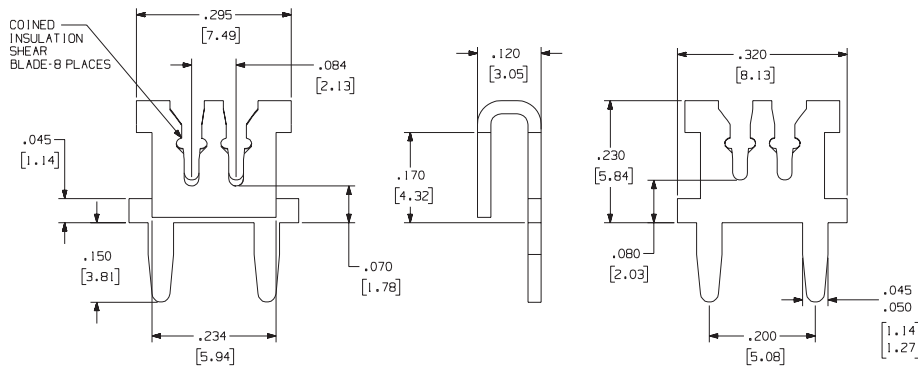
Part Numbers 1185, 6185

Loose Part No.	1185
Reeled Part No.	6185
Mounting Type	Outward or Inward Splay
Material Thickness / Type	0.032" (0.81mm) Brass
Standard Finish	Loose: 100% Tin over Copper Reeled: 100% Tin over Copper
Wire Gauge Range	#24-18 AWG
Mounting Hole Diameter	2 x .058" ±0.003" (1.47mm ±0.076) holes on 0.20" (5.08mm) centers
Current Rating	20 Amperes
Applicator System	Loose: WTP-4ALL Reeled: Model 9700, 9700 XY Wire Termination: Consult factory.



Part Number 6072

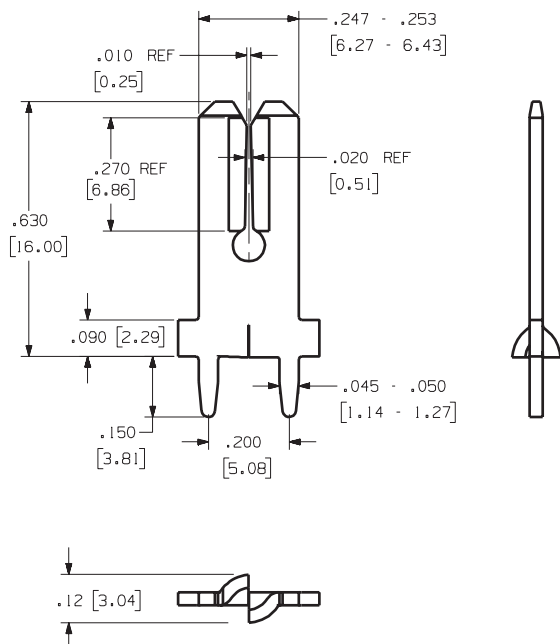
Loose Part No.	N/A
Reeled Part No.	6072
Mounting Type	Outward or Inward Splay
Material Thickness / Type	0.025" (0.64mm) Brass
Standard Finish	Loose: 100% Tin over Copper Reeled: 100% Tin over Copper
Wire Gauge Range	#19-18 AWG Magnet Wire
Mounting Hole Diameter	2 holes 0.058" ±0.003" (1.47mm ±0.076mm) on 0.200" (5.08mm) centers
Current Rating	15 Amperes
Applicator System	Reeled: Model 9700, 9700 XY Wire Termination: Consult factory.



0.025" (6.35mm) Tab / IDC

Part Number 6205

Loose Part No.	N/A
Reeled Part No.	6205
Mounting Type	Outward or Inward Splay
Material Thickness / Type	0.032" (0.81mm) Brass
Standard Finish	100% Tin over Copper
Wire Gauge Range	#19-18 AWG Magnet Wire
Mounting Hole Diameter	0.058" ±0.003" (1.47mm ±0.076mm)
Current Rating	20 Amperes
Applicator System	Model 9700, 9700 XY



**Manual and Semi-Automatic
IDC Wire Insertion Tools**

Zierick offers a variety of wire insertion tools for wire-to-IDC connections. These include wire insertion hand tools for limited volume applications, and pneumatic hand tools for faster and easier connections for higher volumes.

The "XXXX" in the names of the Tools stands for the part numbers they are inserting.



WTCP-XXXX



WTW-XXXX



WTPPS-XXXX

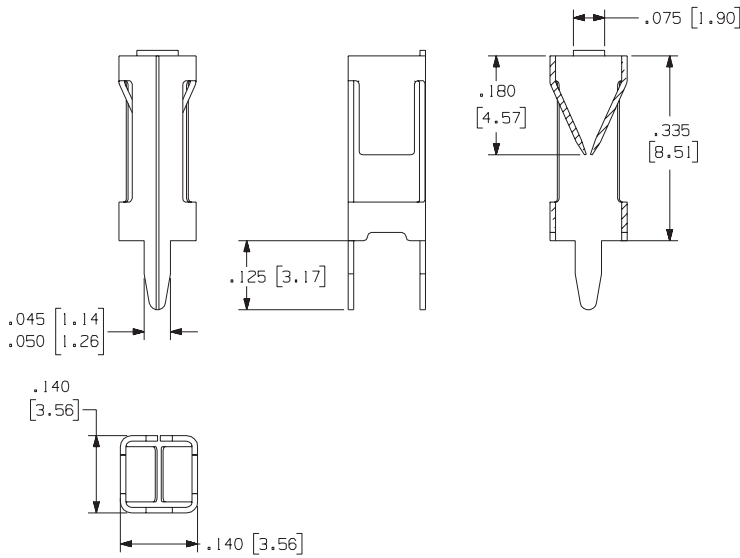


WTP-4ALL



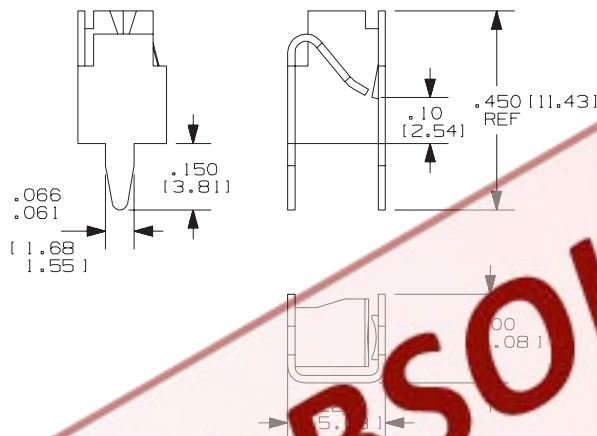
WTPPL-XXXX

Part Numbers 1187, 6187



Loose Part No.	1187
Reeled Part No.	6187
Mating Wire Size	#20-#14 AWG
Mounting Type	Outward Splay
Material Thickness / Type	0.010" (0.25mm) Phosphor Bronze
Standard Finish	Loose: 100% Tin over Copper Reeled: 100% Tin over Copper
Mating Type	Vertical
Mating Entry	Top
Mounting Hole Diameter	2 holes 0.050" ±0.003" (3.81mm ±0.076mm) on 0.130" ±0.003" (3.302mm ±0.076mm) centers
Current Rating	10 Amperes
Resistance Rating	10mOhm Max
Temperature Rating	-65° to 105°C
Insertion Force-Max.	Application Dependent / Submit Mating Terminal Sample to Factory
Withdrawal Force-Max.	Application Dependent / Submit Mating Terminal Sample to Factory
Applicator System	Loose: Consult factory Reeled: Model 9700, 9700 XY

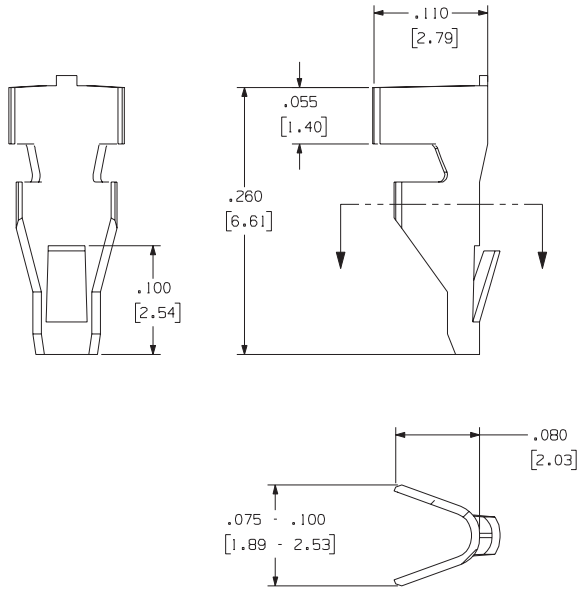
Part Numbers 1176, 6176



Loose Part No.	1176
Reeled Part No.	6176
Mating Wire Size	#14-#16 AWG
Mounting Type	Outward Splay
Material Thickness / Type	.016" (0.41mm) C26000 Brass
Standard Finish	Loose: 100% Tin over Copper Reeled: 100% Tin over Copper
Mating Type	Vertical
Mating Entry	Top
Mounting Hole Diameter	2 holes 0.072" ±0.003" (1.83mm ±0.076mm) on 0.200" ±0.003" (5.08mm ±0.076mm) centers
Current Rating	10 Amperes
Resistance Rating	10mOhm Max
Temperature Rating	-65° to 75°C
Insertion Force-Max.	Application Dependent / Submit Mating Terminal Sample to Factory
Withdrawal Force-Max.	Application Dependent / Submit Mating Terminal Sample to Factory
Applicator System	Loose: Consult factory Reeled: Model 9700, 9700 XY

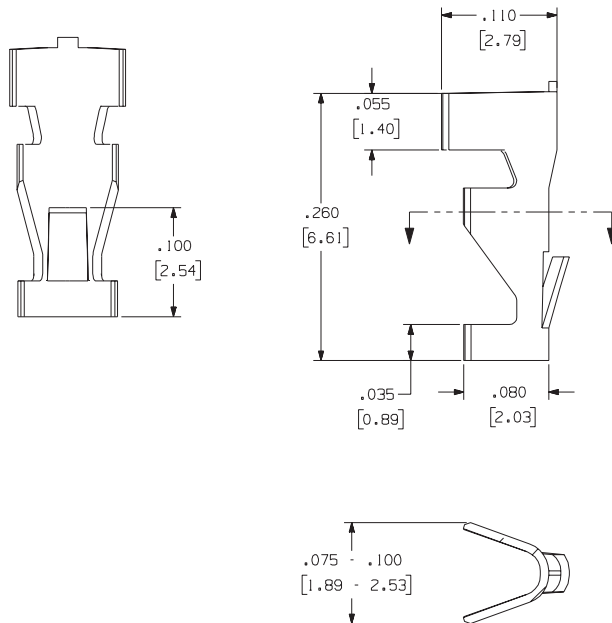
OBSOLETE

Part Number 5044



Loose Part No.	5044
Material Thickness / Type	.020 C26000 Brass
Finish Code	Pre-Finished 100% Hot Tin Dip (consult factory for thickness). Material edges will be bare.
Wire Range	22-18 AWG
Mounting Hole Diameter	0.073" (1.85mm)
Applicator System	Model 4000

Part Number 5088



Loose Part No.	5088
Material Thickness / Type	.020 C26000 Brass
Finish Code	Pre-Finished 100% Hot Tin Dip (consult factory for thickness). Material edges will be bare.
Wire Range	22-18 AWG
Mounting Hole Diameter	0.073" (1.85mm)
Applicator System	Model 4000

Features and Benefits

- Zierick screw terminals allow reliable attachment of discrete lead wires to printed circuit boards.
- They are an alternative to expensive PCB mountable terminal strips and barrier blocks.
- Our screw terminals provide a solid gas-tight connection with improved vibration resistance and minimal long-term stress relaxation.
- They are available in seven basic configurations, and are acceptable for most common wire gauges.
- Available with or without screws, they can be staked or unstaked, turned-down or backed-out.
- They may be ordered in a variety of thread and screw sizes, in addition to our Combination Head Screw.
- They are assembled with solder-resistant 100% stainless steel screws or custom screws if required.
- They are plated with tin overplate and copper underplate for improved solderability.
- Zierick's new Combination Head Screw allows the use of either slot or Phillips head screwdrivers. It is currently available for PN 934 ST.SC. Consult the factory for information on availability of this product.

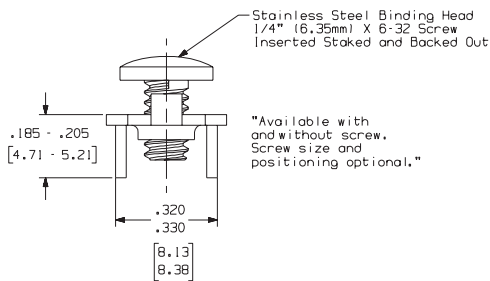
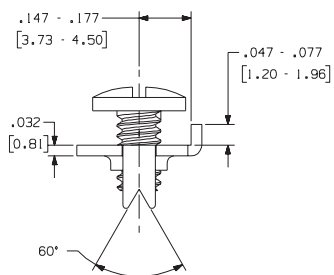
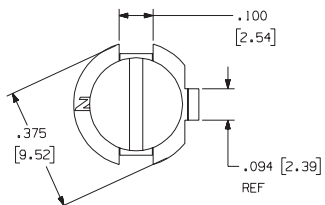


Combination Head Screw
Part Number 934 ST.SC

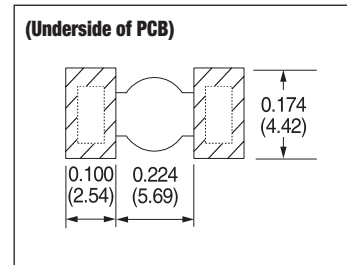
Part Numbers 731, 934 ST.S, 934 ST.SC

Loose Part No.	731	934 ST.S	934 ST.SC
Material Thickness / Type	0.032" (0.81mm) Brass		
Standard Finish	100% Tin over Copper		
Screw Type	No Screw	Stainless Steel Binding Head 1/4" (6.35) x 6-32	
Screw Position	No Screw	Inserted, Staked & Backed out	
Current Rating	30 Amperes		

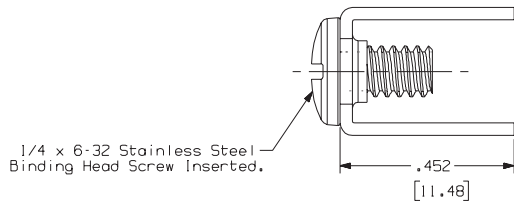
ST.S stands for Stainless Steel Screw. ST.SC stands for Stainless Steel Screw with a Combination Head which can be turned with either a slot head or Phillips screwdriver.



Recommended Pad Geometry

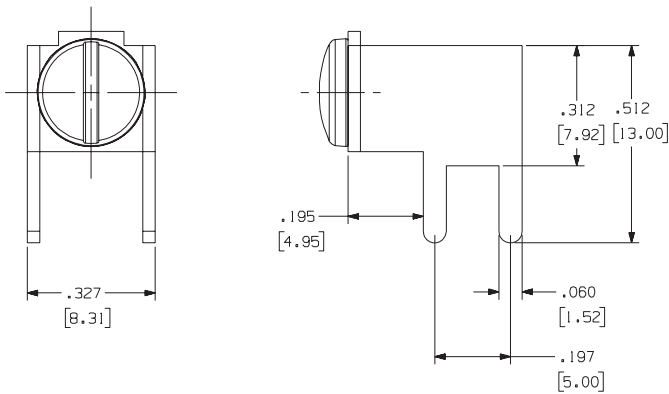
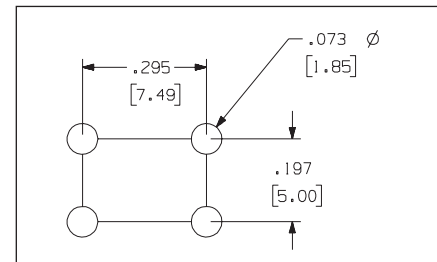


**Part Numbers 1117 ST.S,
1117, 1116 ST.S, 1202**



Loose Part No.	1117 ST.S	1117	1116 ST.S	1202
Material Thickness / Type	0.032" (0.81mm) C26000 Brass			
Standard Finish	Pre-Tinned Brass			
Screw Type	Stainless Steel Binding Head 1/4" (6.35mm) x 6-32	No Screw	Stainless Steel Binding Head 1/4" (6.35mm) x 6-32	Stainless Steel Binding Head 1/4" (6.35mm) x 6-32
Screw Position	Inserted & Down	N/A	Inserted & Down	Inserted, Staked & Backed Out
Wire Stop	No		Yes	
Current Rating	30 Amperes			

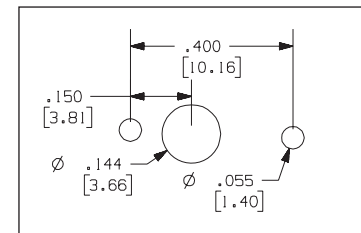
Typical PCB Mounting Hole Configuration



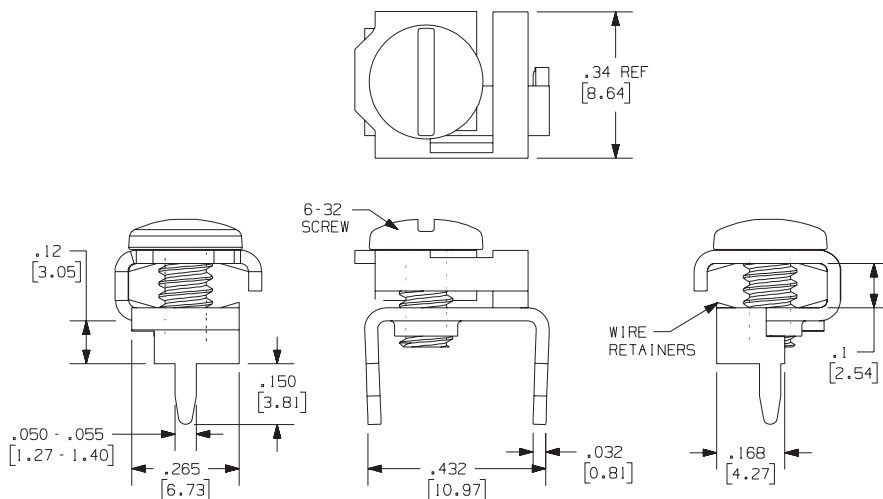
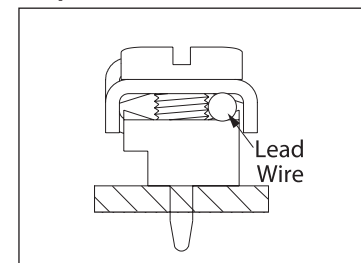
Part Number 1030

Loose Part No.	1030
Material Thickness / Type	0.032" (0.81mm) Brass
Screw Type	Stainless Steel Binding Head 5/16" (7.92mm) x 6-32
Screw Position	Down until just touching surface of part
Standard Finish	100% Tin over Copper
Current Rating	30 Amperes

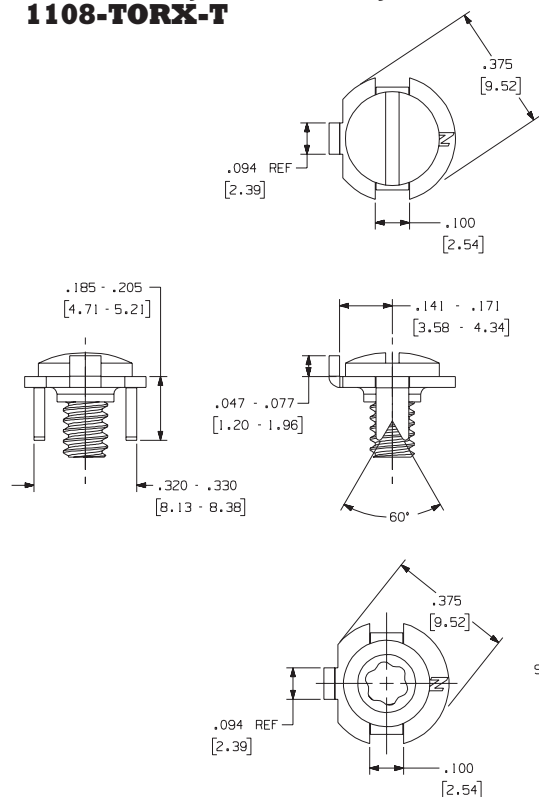
Typical PCB Mounting Hole Configuration



Clamp Down Condition



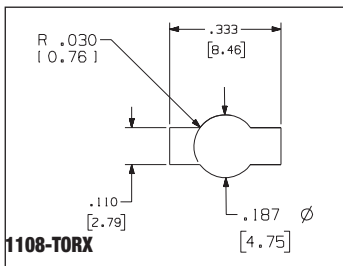
**Part Numbers 1108,
1108-GRSC, 1108-TORX,
1108-TORX-T**



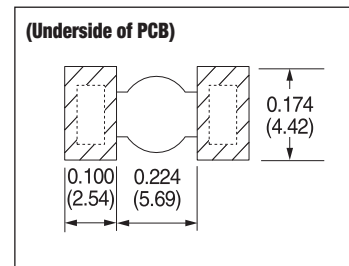
Loose Part No.	1108	1108-GRSC	1108-TORX	1108-TORX-T
Material Thickness / Type	0.032" (0.81mm) Brass			
Standard Finish	Matte Tin			
Screw Type	Stainless Steel Binding Head 1/4" (6.35mm) X 6-32	1/4" (6.35mm) x 6-32 Torx Head Screw		
Screw Position	Inserted, Staked and Down			
Current Rating	30 Amperes			

GRSC is a green screw which indicates it is a grounding screw, and TORX is a screw which requires a Torx screwdriver to be turned.

Typical PCB Mounting Configuration



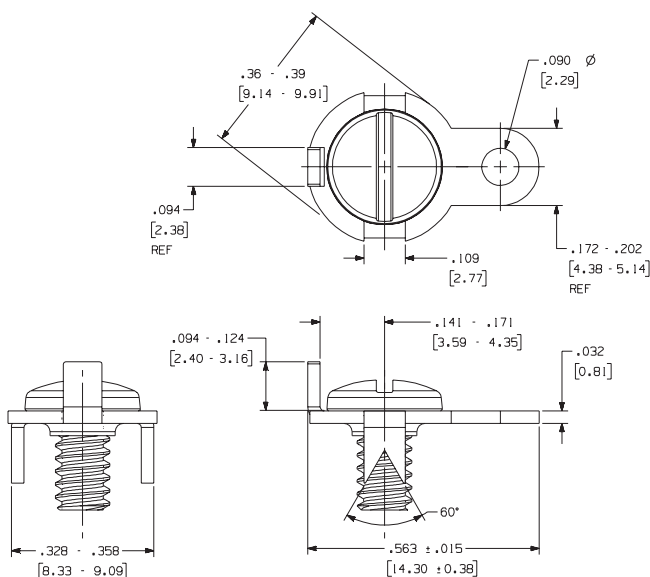
Recommended Pad Geometry



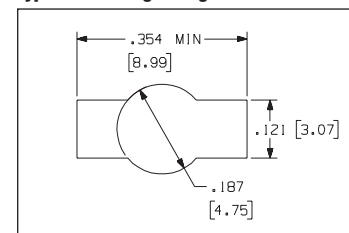
*Available with and without screw.
Screw size and positioning optional.*

Part Numbers 792, 348

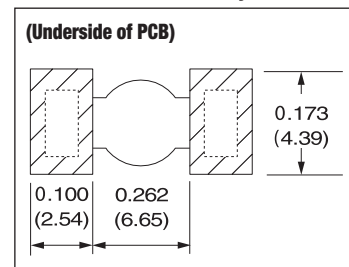
Loose Part No.	792	348
Material Thickness Type	0.032" (0.81mm) Brass	
Standard Finish	100% Tin over Copper	
Screw Type	No Screw	Tin Plated Brass Binding Head 5/16" (7.94mm) x 6-32
Screw Position	No Screw	Down, No Stake
Current Rating	30 Amperes	



Typical Mounting Configuration

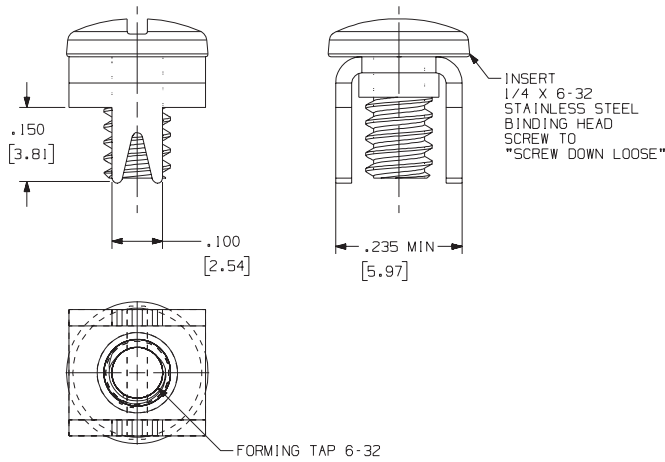


Recommended Pad Geometry

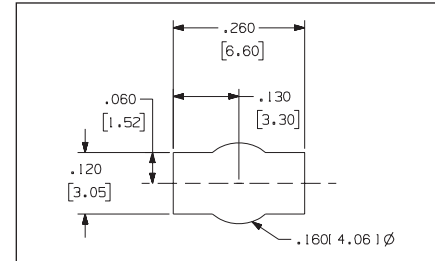


Part Number 1158 ST.S

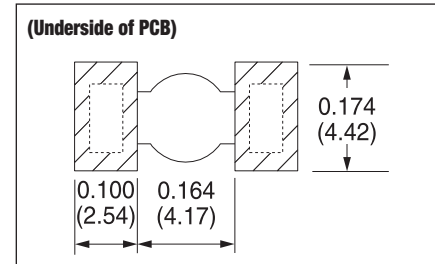
Loose Part No.	1158 ST.S
Material Thickness Type	0.032" (0.81mm) Brass
Standard Finish	100% Tin over Copper
Screw Type	Stainless Steel Binding Head 0.250" (6.35mm) x 6-32
Screw Position	Down, No Stake
Current Rating	30 Amperes



Typical PCB Mounting Detail

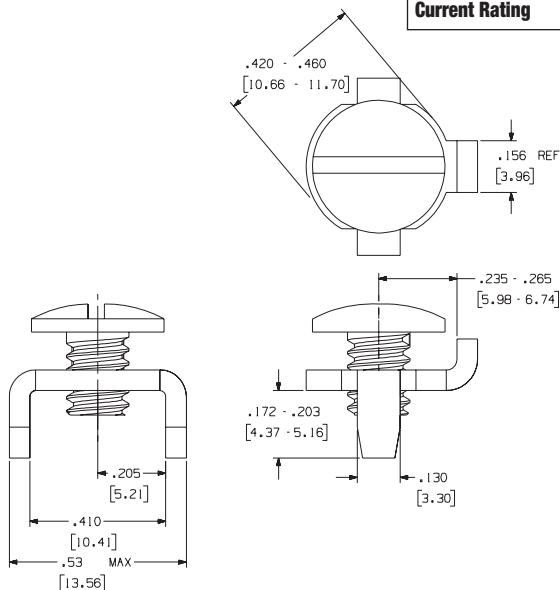


Recommended Pad Geometry

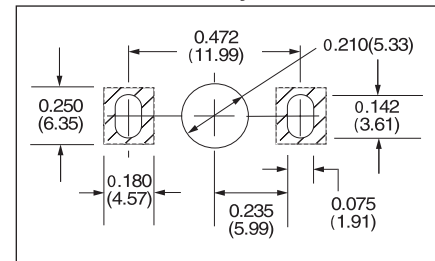


Part Numbers 928, 928-No Screw, 928-No Stake

Loose Part No.	928	928-No Screw	928-No Stake
Material Thickness / Type	0.062" (1.57mm) Brass		
Standard Finish	100% Tin over Copper		
Screw Type	Stainless Steel Binding Head 1/4" (6.35mm) x 10-32	No Screw	Stainless Steel Binding Head 1/4" (6.35mm) x 10-32
Screw Position	Inserted, Staked and Backed-Out	No Screw	Inserted and Down
Current Rating	30 Amperes		

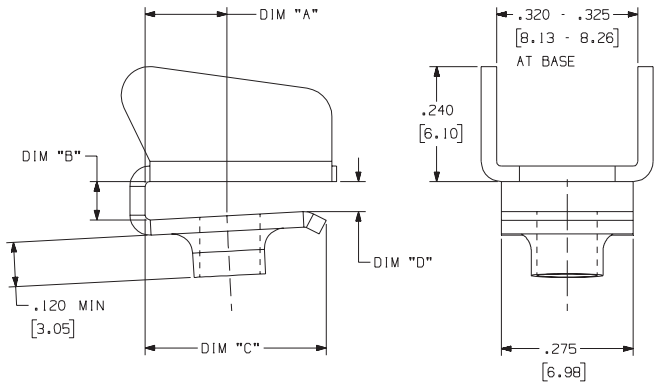


Typical PCB Mounting Configuration and Recommended Pad Geometry

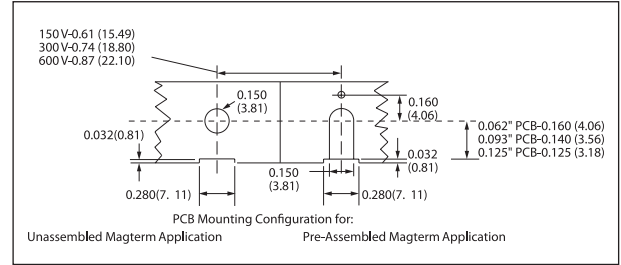


Part Numbers M6111, M6112

Loose Part No.	M6111	M6112
Material Thickness / Type	0.032" (0.81mm) Brass	
Standard Finish	100% Matte Tin	
Screw Specifications	No Screw	
Current Rating	30 Amperes	
Dim 'A'	0.160" (4.06mm)	0.145" (3.68mm)
Dim 'B'	0.070"/0.075" (1.78mm/1.91mm)	0.102"/0.107" (2.59mm/2.72mm)
Dim 'C'	0.380" (9.65mm)	0.365" (9.27mm)
Dim 'D'	0.048"/0.058" (1.22mm/1.47mm)	0.081"/0.091" (2.06mm/2.31mm)

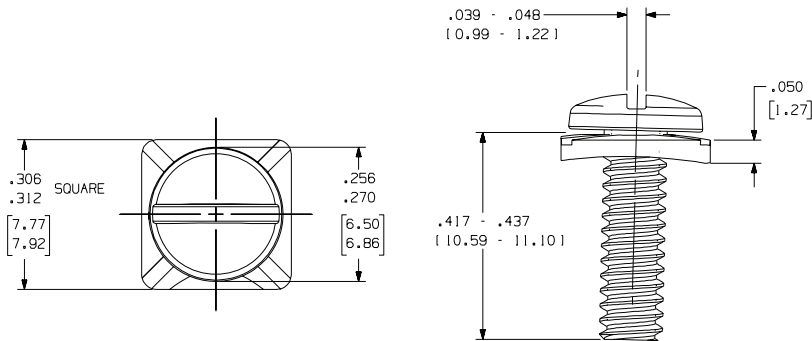


Typical PCB Mounting Configuration



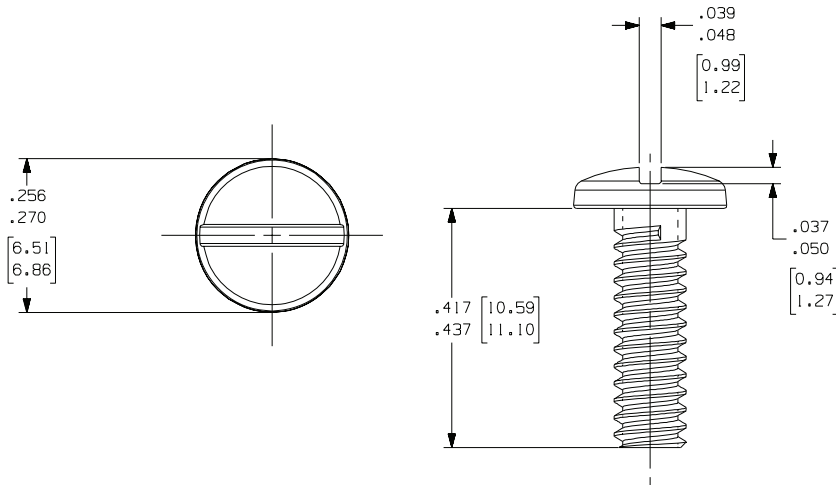
Part Number 7/16 SEMS SCREW

Loose Part No.	7/16 SEMS SCREW
Material Type	Steel
Standard Finish	Zinc
Current Rating	30 Amperes



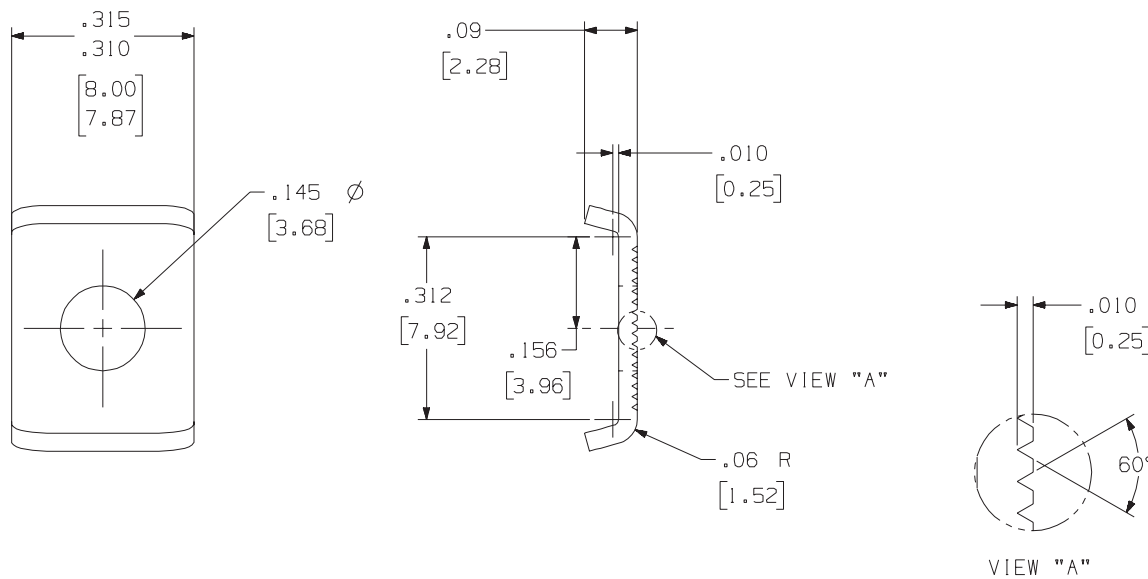
Part Number
7/16 632 BET SCREW

Loose Part No.	7/16 632 BET SCREW
Material Type	Brass
Standard Finish	100% Matte Tin
Current Rating	30 Amperes



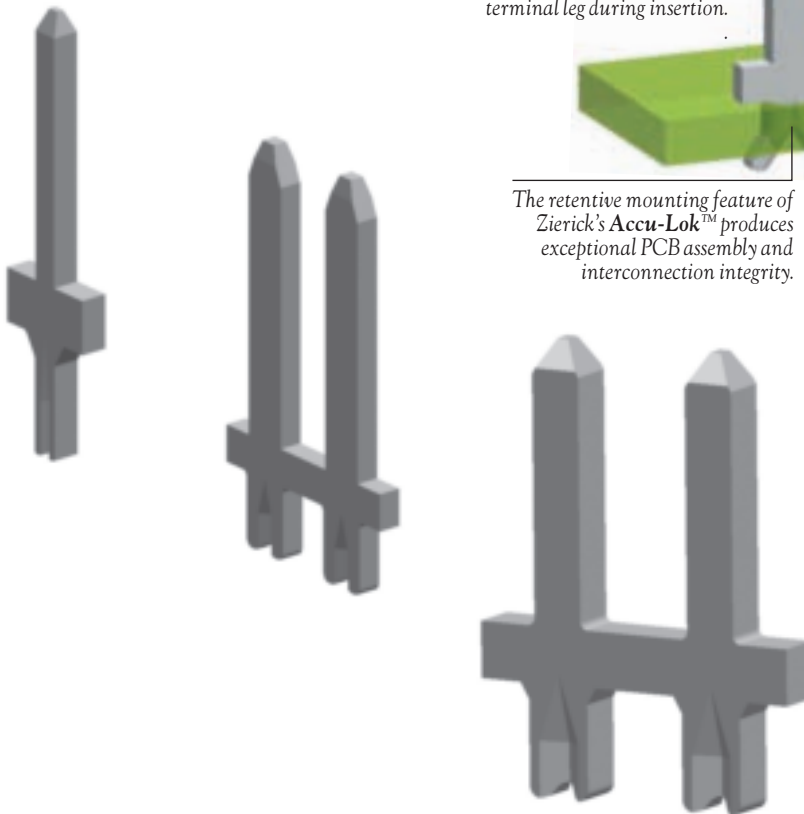
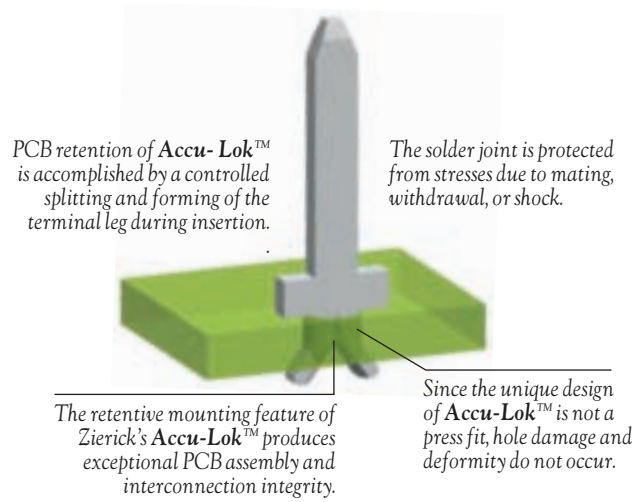
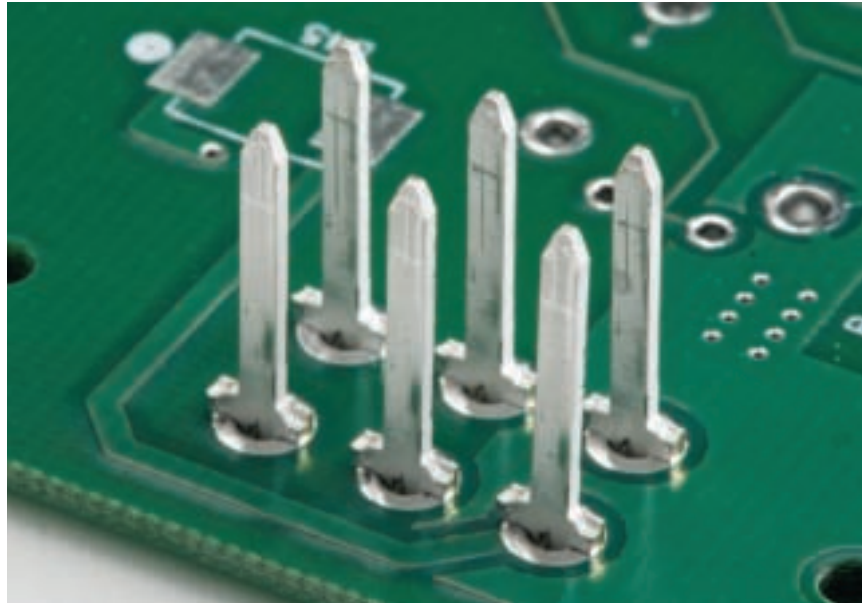
Part Number CPB 9030

Loose Part No.	CPB 9030
Material Type	Brass
Standard Finish	100% Matte Tin
Current Rating	30 Amperes



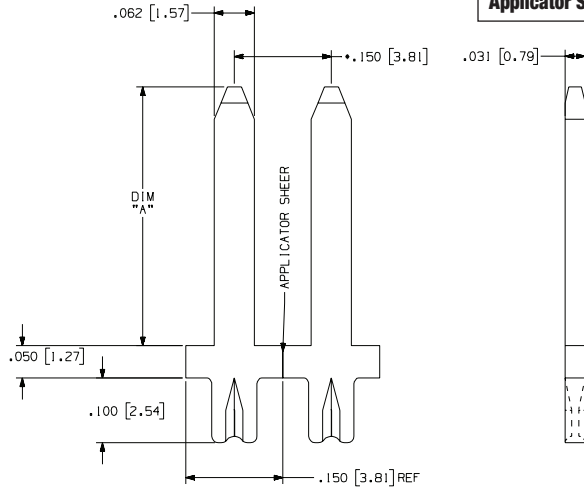
Features and Benefits

- **Accu-Post™** terminals feature a unique mounting design that improves PCB quality and reduces instances of solder joint fractures, and loose or misaligned posts.
- This **Accu-Lok™** mounting assures superior retentive strength, perpendicularity and solder joint integrity.
- Retention is accomplished by a controlled splitting and forming of the terminal leg.
- **Accu-Lok™** mounting permits the use of mounting holes with a diameter tolerance of $\pm 0.003"$ ($\pm 0.076\text{mm}$).
- Forces due to mating, withdrawal, vibration, shock, or temperature cycles are not transferred to the PCB solder joint.
- Since the unique design of **Accu-Lok™** is not a press fit, hole damage and deformity do not occur.

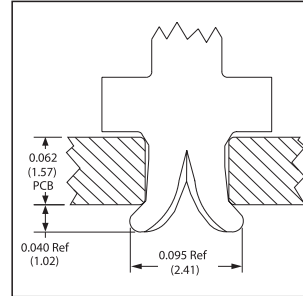


Part Number 6073-xxx

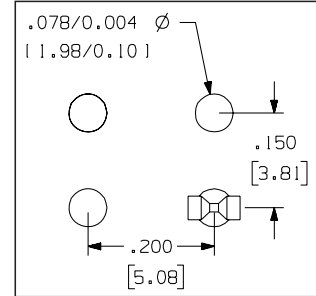
Loose Part No.	6073-300	6073-400	6073-490	6073-615	6073-xxx-xxx
Dimension 'A'	0.350" (8.89mm)	0.400" (10.16mm)	0.490" (12.45mm)	0.615" (15.62mm)	Customer Req.
Mounting Type	Split Leg Splay				
Material Thickness / Type	0.032" (0.81mm) Brass				
Standard Finish	100% Tin over Copper				
Mounting Hole Diameter	0.078" (1.98mm)				
Current Rating	10 Amperes				
Applicator System	Model 9700, 9700 XY				



Typical Accu-Lok™ Mounting



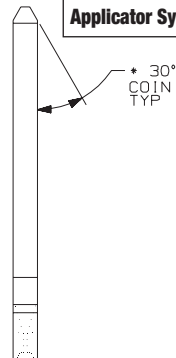
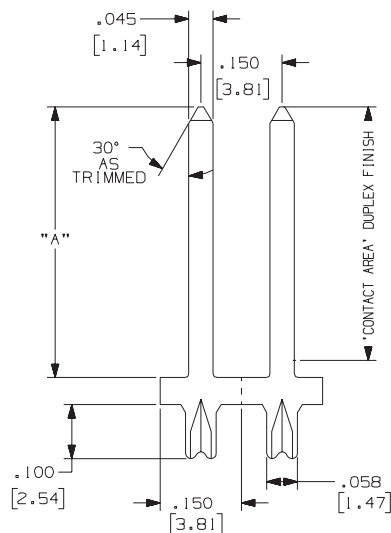
Typical PCB Grid Geometry



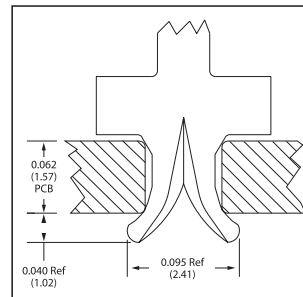
0.045" (1.14mm) Square

Part Number 6075-xxx

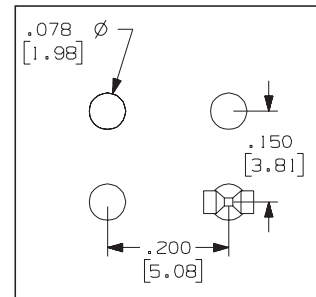
Loose Part No.	6075-250	6075-312	6075-450	6075-500	6075-575	6075-650	6075-750	6075-930
Dimension 'A'	0.250" (6.35 mm)	0.312" (7.92 mm)	0.450" (11.43 mm)	0.500" (12.70 mm)	0.575" (14.61 mm)	0.650" (16.51 mm)	0.750" (19.05 mm)	0.930" (23.62 mm)
Mounting Type	Split Leg Splay							
Material Thickness / Type	0.045" (1.14mm) Brass							
Standard Finish	100% Tin over Copper							
Mounting Hole Diameter	0.072" (1.83mm)							
Current Rating	10 Amperes							
Applicator System	Model 9700, 9700 XY							



Typical Accu-Lok™ Mounting

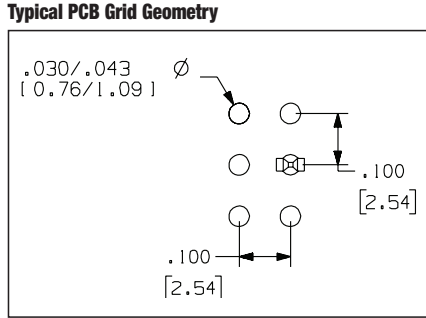
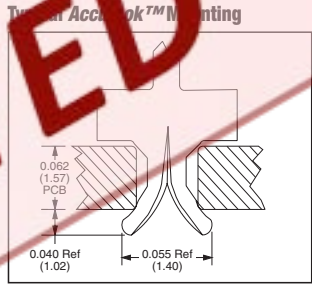
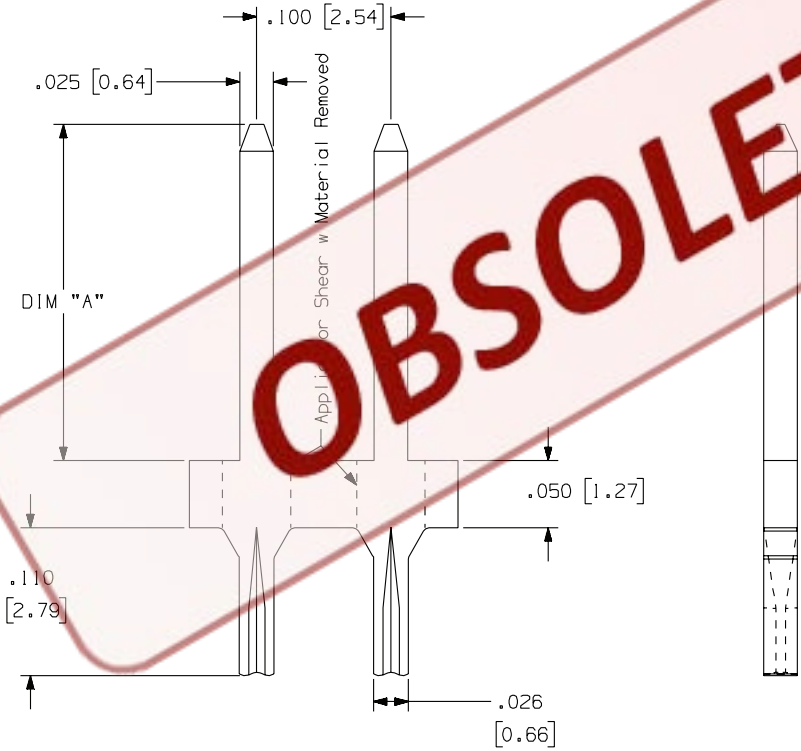


Typical PCB Grid Geometry



Part Number 6143-xxx

Loose Part No.	6143-250	6143-xxx
Dimension 'A'	0.250"	Customer Reqmt.
Mounting Type	Split Leg Splay	
Material Thickness / Type	0.025" (0.64mm) C26000 Brass	
Standard Finish	100% Tin over Copper	
Mounting Hole Diameter	0.030"/0.043" (0.76mm/1.09mm)	
Current Rating	8 Amperes	



OBSOLETE